



## **October 2021 Patrols**

With the Summer making way for Autumn and sun dropping lower in the sky, driving conditions became more challenging with the need for improved awareness of children and bicycle riders on the road. To support this an increase in speed checks, visibility of police vehicles and officers at key locations in the town and the promotion of bright clothing and use of lights. One of these key areas is along Spa Road where many children cross the road towards Domino's or Asda from the skate park and motorists need to be extra vigilant and careful with their speeds. With the drop in temperature we have seen fewer people out in the later evening but there are still a small number of reported cases of anti-social behaviour.

### **October 5<sup>th</sup>**

I began my patrols with new Special Constable Keys and we headed over to Witham from Braintree arriving at just after the 5pm rush hour. We initially conducted mobile patrols around Conrad Road and up on to Rickstones Road, traffic was still busy and a few school children were still present in the area. We then entered the top of Forest Road and continued around to Laburnum Way. There was very little activity on the Recreation Ground and so we moved around to Cypress Road and checked on the flats which have been the location for anti-social behaviour. With no concerns we continued along Cypress Road towards Manor Road until we saw a person on a bicycle that I instantly recognised following reports of suspected drug activity. We turned back and tried to engage with the person but they made off when we attempted to close in. Unfortunately without additional units in the area we were not able to stop them, however, there will be resources looking for them in the future. After completing an information report we then headed on to Church Street, Chipping Hill where we checked on the car park area to the rear before moving onto Spa Road and over to the Hatfield Road estate. During our patrol we located a vehicle of interest, disrupted further suspicious activity and then attended a person following a medical incident. Fortunately we were able to confirm the person involved was all in order and we moved on with our patrols. With our presence noted on the estate we headed over to the Maltings estate, Laurence Avenue, Maldon Road and back in to the town centre for foot patrols. We headed into the Grove Centre and Newlands Shopping Centre and then over to Lime Tree Place before walking down Newland Street and through the Witham Town Park. We then attended a report of a driver in Hatfield Peverel that had unfortunately had a collision with a deer and after safely putting in a protective zone with the aid of another unit we were able to resolve the collision and allow the driver to continue on their journey. Please be aware that these kind of incidents are very common on our country roads and consider this when you are travelling. We were then directed back to Witham for a disturbance in Windsor Close and we were joined by additional units. We finished off our patrols with further checks at previous anti-social behaviour locations, which we found all in order.





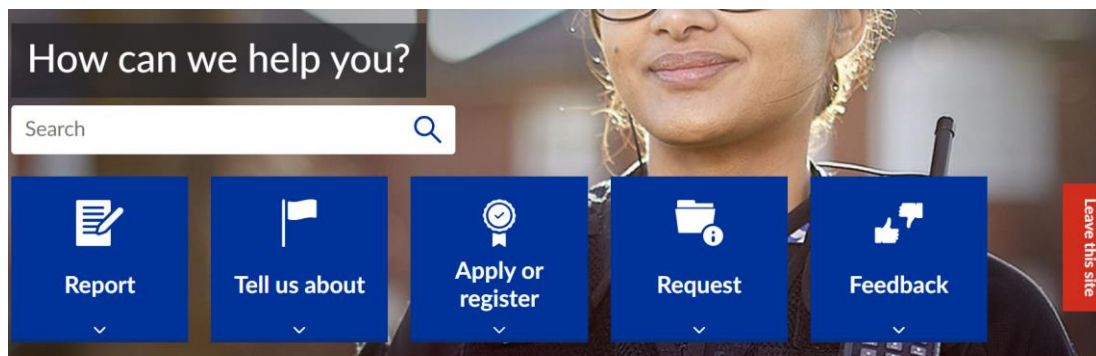
**October 7<sup>th</sup>**

This time I was out with Special Constable O'Connor-Mitchell who had recently completed her training and joined the team at Braintree. As a Special Constable you are provided with the same uniform, responsibilities and powers as a Regular Essex Police Officer but on a volunteer basis. From only 16 hours per month you can gain some great skills, build new friendships all while helping out your local community. If you think this would interest you then please follow the link below.

[Special Constabulary | Essex Police](#)

We started our patrols on Church Street and were in the process of heading on foot to the Templars estate via the railway bridge when we were called to a disturbance on Newland Street between a male and female. On our arrival outside the Witham Town Library we located the couple and after calming them both and resolving their differences we were able to resume our patrol. We headed through town and up to the Hatfield Road estate and as we toured Allectus Way we found two people who we believed were involved in drug related activity. This was further enhanced after they both fled after seeing our vehicle. We jumped out and searched the area before locating one of them cycling across the field to the rear of Philip Road. Although requested to stop the person refused and cycled back into the centre of the estate. Fortunately, we were able to gather enough information to identify both for future action. Please continue to report any suspicious behaviour to us via the links below

[Report antisocial behaviour | Essex Police](#) or visit [Home | Essex Police](#) where you can also use the new Live Chat function between 7am-11pm every day.



## What's happening in your area?

Get the latest crime statistics and advice, help us with appeals for information and find out what we're doing to tackle crime in your area.



After spending some additional time on the estate to provide a visible deterrent we then headed over to Humber Road where we were joined by another Witham Community Special Constable Acting Sergeant Mabey. Together we conducted foot patrols on Colne Chase, Brent Close, Helford Court, Ness Walk, Teign Drive, Medway Avenue, Ouse Chase, Yare Avenue, Bure Drive, the shopping area on Spa Road, before returning to our vehicles. We next headed up towards Hatfield Peverel but during our stop at the COOP garage we were able to brighten a young lad's day with a quick chat and a brief flash of the blue lights. On our return to Witham we conducted more mobile patrols around the Hatfield Road estate and Flora Road estates where we pulled over a vehicle for insurance checks. We concluded our patrols along Cypress Road and Forest Road with no concerns.



## October 10<sup>th</sup>

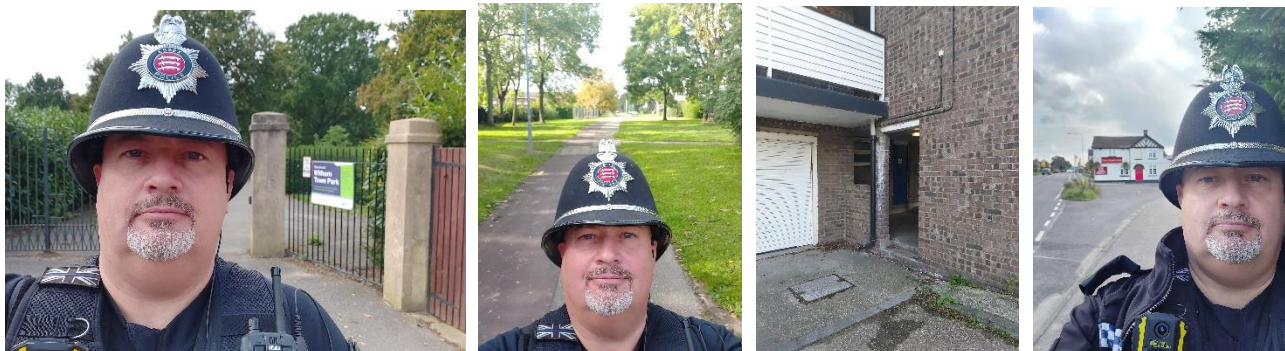
The first part of my patrol began with a Community Event in support of Walk & Talk 4 Men ([www.walkandtalk4men.com](http://www.walkandtalk4men.com)) Witham Councillor Chelsey Jay had asked me if I was interested in the event and I was very pleased to not only take part for myself but also as a Police Officer on behalf of Essex Police. I consider this to be a very worthwhile endeavour and pleased to see a good turnout to support and raise awareness. With no pressure, a walk is organised which allows people (not just men) to amble and talk, maybe share some stories from their lives or provide an ear to others willing to share theirs. As a Police Officer I have seen many instances where men of all ages have been too proud or too tough to show any vulnerabilities and sometimes this is due to social expectations, however, things are beginning to change and this is one of groups dedicated to making that happen. I will continue to support and hope that others will join in. With a group including Councillors Sindhu Rajeev & Ross Playle and organiser James Mace, we followed the River Walk from Bridge Street and continued all the way up to Bramble Road before doubling back and heading back in to the Town Hall on Guithavon Street.







After a brief stop at the Town Hall I was back on foot patrol in the Town Centre, firstly visiting the Witham Town Park, Maldon Road and The Grove Centre. I then headed over to the Lockram Lane car park and engaged with a rough sleeper, providing advice and completing a support referral. I am pleased to report that this has been successful and CHES are now engaging positively with the person. I then crossed over the road to Lime Tree Place to conduct some reassurance patrols before heading up Collingwood Road towards the train station.



From the train station I walked along Cut Throat Lane and visited a site where recent anti-social behaviour had re-appeared. I was able to provide visibility and reassurance but also witnessed some evidence which supported the reports. Additional patrols will now be actioned to deter future activity. I then walked along Forest Road and up Laburnum Road to the Recreation Ground. I cut through the ground and on to Rickstones Road before crossing into the Templars estate. I patrolled through the estate and was pleased to see no issues or concerns and finished my patrol with a visit to The Cherry Tree where I met with the land lady before being collected by a colleague. Over the course of my patrols I covered approximately 7km.

### October 11<sup>th</sup>

I arrived in Witham to carry out speed checks on Conrad Road. There has been an increase in the number of residents that have spoken to me about speeding in Witham and this road was one of the key zones. I set up opposite to the entrance to Munro Road and checked different vehicles over a 60 minute period. Residents have been reporting excessive speeds at varying times of the day and night and starting at 17:30 provides one just one snapshot. Within just a few minutes I had stopped one driver for 39 miles and hour and issued a ticket. I then stopped a further two cars for excess speed before a car travelling at 43mph towards me, braked hard, reversed and sped off back up the road. This was reported as a fail to stop which is a serious offence and enquiries are ongoing. With the hour complete and the frequency of cars dropping significantly I moved my patrols in to the Town. After carrying out foot patrols I then positioned myself on Newland Street opposite the Town Hall for further speed checks. At times there has been a number of vehicles that have been accelerating aggressively, speeding or driving without due care and attention and this increases the risk of accidents, especially with many people now back out in the town at the various restaurants and public houses. With the evenings now getting darker earlier it is even more important that drivers give themselves enough time to react to the movement of cars on Newland Street and pedestrians. Over the course of an hour I spoke to three drivers in regards to their excessive speed and a further two drivers for defective lights on their cars. Following the results I then returned to my vehicle to carry out mobile patrols visiting the Hatfield Road estate, Maltings estate and Forest Road where I also called in at a previous anti-social behaviour location on Cypress Road.



## October 16<sup>th</sup>

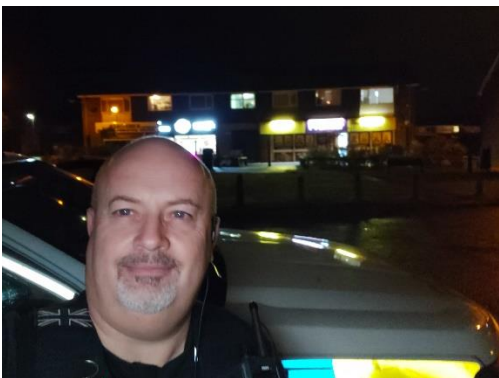
I started my shift stopping at The Cherry Tree, before heading over the railway bridge to Church Street. I then travelled via Chipping Hill and Powers Hall End to the Humber Road estate following reports of suspicious activity near to Colne Chase, although I was unable to find anything at the time a police information report has been submitted for future patrols. I then moved in to the Town Centre where I carried out high visibility foot patrols on Newland Street, visiting The Swan Public House, Witham Town Park, Maldon Road, The Grove Centre, Newlands Shopping precinct and Lime Tree Place. Before I returned to my vehicle I checked on the welfare of homeless people ensuring that they had contacts for seeking additional help and support. I then headed over to the industrial areas to provide further visibility and reassurance. After concluding these area patrols I visited previous locations of anti-social behaviour and I was pleased to see that there were no occurrences happening or being reported at this time. During my mobile patrol I did locate a number of vehicles of interest and these have been recorded for future investigative actions. Over the course of my shift I visited most of the estates on numerous occasions before heading out to James Cooke Woods and the surrounding area for further anti-social behaviour checks.





## October 18<sup>th</sup>

I arrived in Witham starting my patrol on Conrad Road where I monitored traffic speeds before moving over to Forest Road. After checking on a location where anti-social behaviour had again been reported I attended an incident near to Hatfield Road where a stolen vehicle had been reported. After carrying out checks I was able to confirm this status and the vehicle was recovered pending its return to the rightful owner. If you are aware of a suspicious vehicle that has appeared recently in your area then please report this and we can follow up with the appropriate checks. On some occasions these vehicles may be stolen and your assistance can help to solve a crime. With the vehicle recovered I then carried out patrols on Allectus Way, the Lodge Farm estate, Gershwin Boulevard, Dengie Close, Pattison Close and a welfare check for a person in Constance Close. I returned to the Town Centre where I visited The George, The Red Lion and The Swan before patrolling the Hatfield Road estate. I was then called to assist with a domestic related incident on the Templars estate and shortly after headed out of Witham to Halstead to assist with a serious incident.



## October 20<sup>th</sup>



I was crewed up with Special Constable O'Connor-Mitchell for our shift but before we were able to get to Witham we were diverted to other emergencies across the district. When we did get in to Witham we attended the Witham Town Park and carried out patrols on Maldon Road, The Grove and the industrial areas before we responded to a disturbance on Newland Street. For the remainder of our shift we recorded the details of the incident and ensured the wellbeing and safeguarding of the victim with additional support from our mental health team. The incident will require a number of checks over the coming weeks in order to work on an appropriate solution.



#### **October 24<sup>th</sup>**

I was crewed up with Special Constable Eaketts to carry out a series of speed checks in Witham. Our first location was Spa Road/Highfields Road. This is a 30mph limit stretch of road and with the skate park sees a regular migration of children between the park and the shops. Unfortunately the children do not use the crossing point which is further up Spa Road and this makes it particularly dangerous for them and drivers. We carried out a survey on 100 vehicles and stopped 3 drivers, issuing tickets for excess speed and a further 2 drivers stopped for words of advice. The highest speed recorded was 39mph. We then headed in to the Town Centre to conduct foot patrols before heading over to Collingwood Road. We also surveyed 100 vehicles in this location and had to report a driver for 45mph in the 30mph limit, 2 other drivers were given words of advice for lower speeds but still over the posted limit. Our third speed check site was on Cressing Road, this is a location that many residents have mentioned previously while I have been out on patrol, specifically vehicles travelling out of Witham towards Braintree. After finding a suitable location we carried out a further 100 vehicle survey but I am pleased to report that we did not have to stop any drivers with only one driver visually indicted to slow down. We understand that there will be different times when speeding is observed and therefore we will return to these and other locations in the future. We completed our duty with further mobile patrols in the town before heading over to Humber Road & Spa Road park for foot patrols.

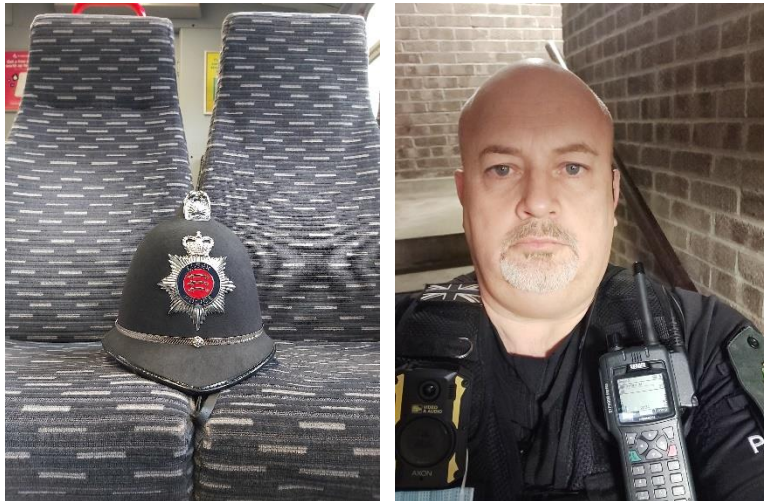




## October 25<sup>th</sup>

I started out from Braintree on the train to Witham to begin my Community Special Constable patrols. I had some very positive engagement with passengers at Braintree before alighting at Witham station. On arrival I was able to assist a member of Public and talk to Greater Anglia staff. As I exited the station I was able to discover some information regarding the behaviour of people previously known to me in the Witham area. This would not have been possible if I had not travelled by train to Witham or been on foot patrol which demonstrates the value of this kind of visibility in the community. From this location I headed towards Morrison's for further enquiries before conducting reassurance patrols at designated locations. I was now in company with PC Davies of the Witham Town Team and Special Constable Truscott. We travelled along Maltings Lane before a young male made off on an E-Scooter in to the Maltings estate. Although we searched the area there were no further sightings. If you are aware of anti-social behaviour involving the use of E-Scooters then please report this online or via 101 to Essex Police (please see links above) From this area we then headed on to the Hatfield Road estate to conduct reassurance patrols and in to the Town Centre where we parked up for foot patrols including The Grove, Newlands Shopping Centre, Lime Tree Place and Newlands Drive. To finish my patrol in Witham I checked on a previous location which had been reported for an increase in anti-social behaviour and pleased to see that there were no concerns.





#### October 27<sup>th</sup>

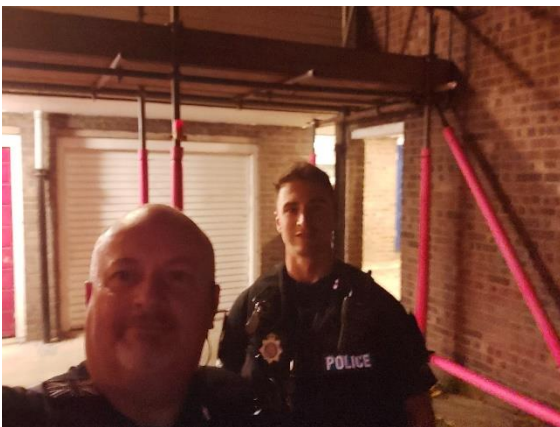
Special Inspector Campbell joined Community Safety Engagement Officer PC Draper attending Elm Hall School for an Active Essex session. They presented a fully interactive experience looking at the role of a police officer. There were lots of great questions and interactions with the children around their perception of what a police officer does in the community and the equipment we use. To finish off the presentation there was an opportunity to explore the police van and with the lights this put smiles on many of the children's faces. This engagement in schools is vital as we move forward to show the positive image of policing and this will help in future interactions.



#### October 28<sup>th</sup>



Our patrols began on the Templars estate with investigation and incident recording for anti-social behaviour following reports of targeted properties. Following a meeting with the victim we then followed up with an agreed course of action with the victim where we went and spoke directly to the suspects. This initial low-level approach is to try and prevent further ASB without the need for behavioural contracts which may include restrictions on the suspects movements or attendance in certain areas. We were able to speak to both the suspects and appropriate adults and reiterate the unacceptable actions. Hopefully this will resolve the issues and there will be no further reports. Following this incident, we then went to check on other local ASB areas in Witham but pleased to see no ongoing issues. We moved over to the Maltings estate and carried out visible and reassurance patrols before heading on to Humber Road and Flora Road. While we were on Maldon Road, we noted several cars travelling at excess speeds and therefore we will be looking at speed checks in this location again in the future. During our patrol on the Hatfield Road estate we gathered some information regarding a suspicious vehicle but were then called away to support another Police unit requiring urgent assistance on Spinks Lane. Fortunately, as we were already in Witham, we arrived to help in under 2 minutes, once again showing the benefit of our role in Witham to provide an ongoing presence.



### October 30<sup>th</sup>

I was initially crewed with Special Constable Eaketts and we attended the 'Spooktacular Trail' set out along the River Walk between Guithavon Road & Chipping Hill. On our arrival it was still raining so we put on our high visibility coats and set off. With an introduction to the Wizard at the start we walked through to the Duck Pond, taking in the amazing sights of the various birds on the water including the family of swans! As we moved along the trail, we met with various members of the Witham Town Council and support team who had dressed up in costumes to add some colour and excitement for the young children. After a short while we walked into the Town Centre for some visible foot patrols and luckily the rain had stopped. We re-joined the Halloween trail and it was fantastic to see so many children and parents enjoying the event.







In the afternoon, however, we were needed back in the Town Centre following an incident and with investigations and recording we were not able to return to the trail until the very end. During our patrols on the River Walk we are still seeing a significant number of personal E-Scooters being used and will look at a plan to tackle this including education and or seizure of the scooters. Following the conclusion of the 'Spooktacular Trail' we then headed back to Braintree to change vehicles and collect another Special Constable so we could continue supporting high visibility patrols in Witham through the night. During these patrols we visited The Cherry Tree, The George, The Red Lion, and The White Hart who were all getting into the 'spirit' of Halloween with fancy dress parties. It was fantastic to see the different establishments busy and we had some very positive engagement. We carried out further foot patrol along Maldon Road and Newland Street before returning to our vehicle for mobile patrols. We initially headed out to the Hatfield Road estate where we recorded several suspicious vehicle movements. After checking the vehicles, we moved on to the Maltings estate before dropping down on to Howbridge Road and visiting Pattison Close. We were then alerted to a firework related incident on Forest Road and travelled across town to investigate. Fortunately, on our arrival there were no further concerns. We moved on to the Humber Road estate and assisted a driver with faulty lights before moving up Spa Road and on to Flora Road. There had been previous reports of anti-social behaviour in Bramble Road but there were no issues during our patrol. On our way to visit the train station we were then directed to an incident at the Spring Lodge Community Centre and due to the numbers involved we were joined by a Local Policing Team unit from Braintree and additional officers on Halloween patrol duties. Fortunately, with the increased Police presence the situation was defused, and the various parties disbanded and left the area.



This concludes the monthly report for October 2021.