

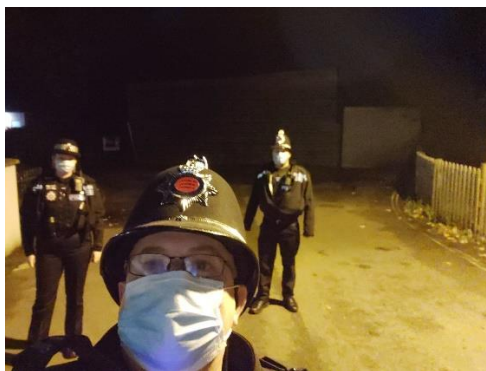
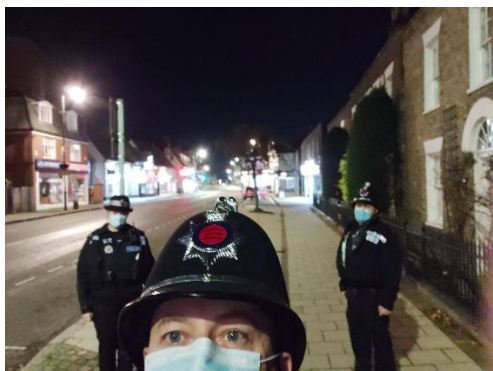


November 2020 Updates

The beginning of November always brings firework related concerns, however, due to the lockdown rules that were implemented on the 5th there was a significant reduction in incidents surrounding fireworks, especially after we had dealt robustly with an individual from a group at the end of October. We still wanted to provide a high visibility presence, and these have been reflected in the report below. We still need residents to keep reporting any incidents and to share any intelligence or observations that they may be concerned over. With this information we can take positive action in the neighbourhood.

3rd November

We commenced our patrols on the Flora Road estate, Honeysuckle Way, Bramble Road before moving over to Rosebay Close. We then moved down Spa Road to the Humber Road estate where we checked out the Douglas Grove Surgery, where we had encountered groups gathered previously. Fortunately, there were no issues, so we moved on to the Spa Road Park and Asda before heading round to Blunts Hall Road. There were no concerns at this location. We attended a domestic abuse related incident before heading on to the Maltings estate for a vehicle obstruction. We were able to resolve this with some local enquiries. We then headed into town for foot patrols on Newland Street, Newlands Precinct, The Grove Centre and Witham Town Park. While in the town we provided advice to a large group and provided further words of advice to a person riding an electric scooter who was unaware of the current law.

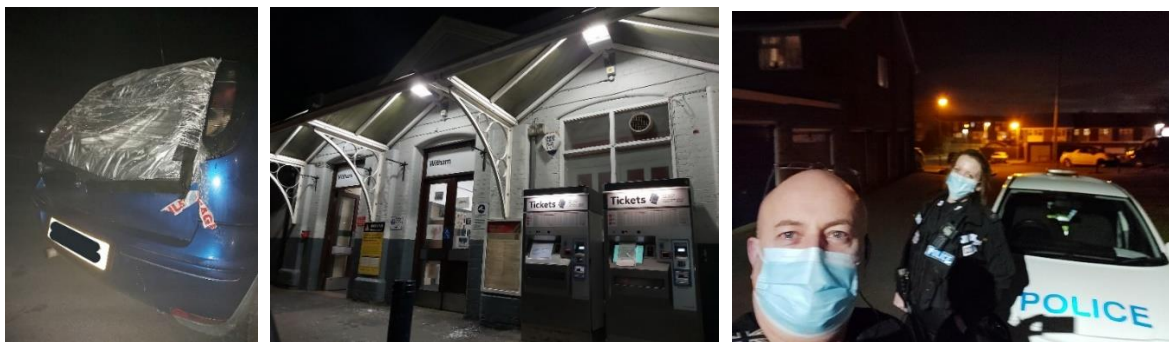


5th November

Following concerns in the area of Dengie Close we attended this vicinity to provide some visibility, although we did not encounter any issues, we will increase patrols in this area to continue to provide some reassurance. We then moved up to the Maltings estate where we encountered a vehicle parked up in the Haygreen Road car park. After consulting with a traffic officer, we gave strong words of advice on the roadworthiness of their vehicle and then asked them to leave the area. We then moved our patrol over to the Forest Road area but shortly after we were directed to

30th November 2020

the Witham train station for reports of an assault that had only just occurred. We were able to be with the victim in under 2 minutes, once again showing the benefit of our CSC patrols. We worked to obtain details of the assault, provide support and then took the victim back to Braintree Police Station to obtain DNA samples. Due to local knowledge I was able to direct another unit to the site of the attack before we returned to patrol the area to look for evidence and scope for CCTV sources.



6th November

We commenced our high visibility patrols on Spa Road before we headed towards Blunts Hall Road following reports of a firework related incident. When we arrived on scene a group of 5 people ran from the area leaving a mountain bike, alcohol and a joint containing cannabis. After commencing a further area search one of them returned for their bike. We carried out a stop search on this individual which produced further drug related paraphernalia. With the bike and drugs, we then took the person home to their parents where we explained the situation and provided guidance for social distancing. The bike was returned but the drugs and associated paraphernalia were seized for destruction. A review for this repeat offender will be carried out to determine if there is an appropriate intervention to prevent this drug related behaviour.





10th November

We had two CSC officers out on patrol tonight with the capability of being able to tackle drug related tasks. Following our initial patrol of the areas previously known for drug related activity, we headed towards the River Walk. With one officer dropped off near to Pattison Close and the other at Bridge Street we were able to stop an individual who was smoking cannabis. Following a stop search of this person we then located a quantity of class A drug on them. We dealt with this at scene and the person involved commented on our manner of dealing with them in a positive way. We then moved on to foot patrol in the town, before attending the Grove Centre following a disturbance. After returning to a mobile patrol we stopped a vehicle due to the manner of their driving. We were also able to attend a suspicious circumstances incident at a local car sales garage and provide a visible presence in the area.



11th November

During morning foot patrols one officer of the Witham CSC team covered Spinks Lane, Highfields Road, Spa Road, calling at the CO-OP, ASDA and Maltings Academy where there was positive engagement with students and teachers. The officer then headed into town along the River Walk, Witham Town Park and the main shopping areas providing reassurance and visibility.



30th November 2020



13th November

During the patrol the team covered Witham carrying out patrols on Forest Road, Laburnum Way, Cypress Road, Witham Train Station, Chipping Hill, Spa Road, Humber Road. They then moved on to the Maltings & Redrow estate providing visibility and reassurance. Following this they moved on to the town heading on to Newland Street, Guithavon Street, Collingwood Road before heading out on Braintree Road. While on Braintree Road the team stopped an individual, who had fallen off their electric scooter, this person promptly tried to run off before being apprehended by the team. Following a stop search the person was found with a quantity of class B drugs and a knife. The person was arrested for concerned in the supply of drugs and possession of a bladed article and their scooter seized.



15th November

The intended purpose of the patrol was to call on a person wanted in connection with drug offences and I was accompanied by PC Wilshire of the Witham Town team. During our patrol we travelled along Maldon Road where a young person made off into Witham Town Park on an electric scooter. As we followed the person into the park, we were alerted by a member of the public to a group near to the toilet block at the bottom of the park, who were believed to be smoking cannabis. We attempted to make our way through the park, which was very busy with people and children, however, before we could get close, the group of 5 or 6 made off into Kings Chase out of sight. We returned to our patrol vehicle and made our way down Newland Street and into Kings Chase where another member of public with their family handed us a small bag of a green herbal substance that was dropped by the group as they ran out of the park. While we disrupted their activity and our presence was effective we only discovered this due to the person on the electric scooter – there were no reports to Essex Police from anyone in the park of this anti-social and illegal behaviour and we need to encourage people to report this. Due to previous intelligence we attended an address nearby to see if we could locate any of the group but instead, we found a different group of people who were also using cannabis. These people were dealt for the drugs and issued with tickets for breaching social guidelines. We then carried out a further patrol in the area of Blunts Hall Road, where once again a small group initially made off from us, leaving a mountain bike behind. While we were waiting for an additional unit to arrive a number of people from the area came out to meet with us and talk to us about the ongoing problems at the start and finish of school times and

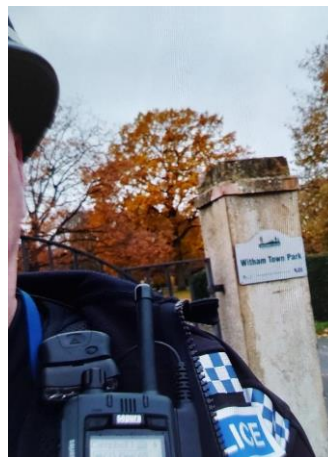
30th November 2020

evenings, with suspected drug use, drinking, verbal abuse and obstructing the road. We have taken on board this information and will be providing focused patrols in the area and we will be working with the local school. Just before we were due to leave the area the owner of the mountain bike returned and following a stop search, drug paraphernalia was found. This person is was returned to their home address where we discussed options going forward. This was not the same person from the previous incident at this location.



16th November

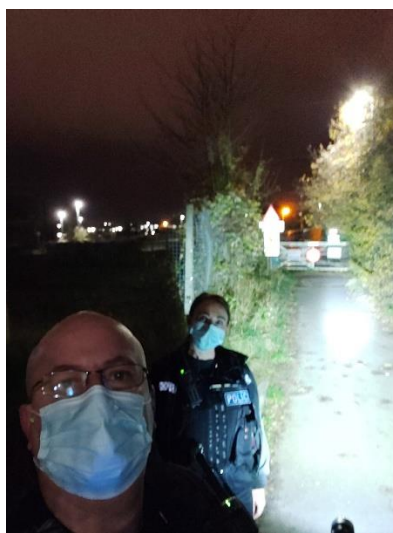
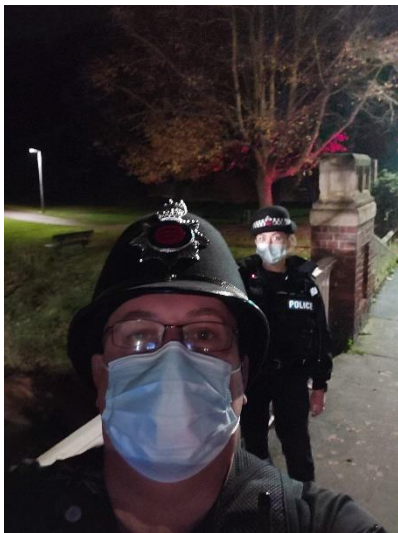
An officer from our team conducted an early morning foot patrol, heading in to Witham from Braintree on the train, arriving in time to head up towards the Templars Academy & New Rickstones Academy where there was positive engagement with students and teachers. This provided a visible police presence and hopefully some reassurance. The officer had time to engage with a young 5-year-old future police officer about fitness and joining up one day! From this area the officer headed in to town along the River Walk then on to Newland Street, Newlands Precinct, The Grove Centre and Witham Town Park before heading back towards the train station.



30th November 2020

17th November

We were fortunate to be joined by an additional Braintree Specials unit for patrols in Witham which allowed us to coordinate mobile patrols around the town. We covered the Flora Road area, including Calamint Road, Foxglove Close & Speedwell Close before heading over to Honeysuckle Way & Bramble Road. We visited the Forest Road estate, checking Cut Throat Lane by foot and the other unit checked on vehicles parked near to the Cemetery entrance. We carried out further patrols around Witham with no reported incidents, however, we did follow a vehicle leaving Witham towards Hatfield Peverel. Although we lost sight of this car, we did locate a vehicle in the Village Hall car park involved in drug supply. Although the occupants made off, we have their details and we seized drugs and the vehicle, enquiries are ongoing.





24th November

We carried out mobile and foot patrols in Witham, commencing in the Flora Road area, including Honeysuckle Way, Bramble Road, Rosebay Close & Calamint Road before heading along Spa Road to the Humber Road estate. After checking the Douglas Grove Surgery, we moved on to ASDA and the Witham Town Football Club & Skate park. Our patrol then continued along Highfields Road and on to Blunts Hall Road where we checked on the area previously a focal point for anti-social behaviour. This was revisited several times over the shift, and I am pleased to report there were no issues observed. We then moved up Hatfield Road and on to Allectus Way, checking on the shops, Alan Road play area and field with no issues. Moving up to Gershwin Boulevard we checked Haygreen Road for vehicles and then the local area around Baker Way following up a report of drug use. There was no evidence of this at the time of the patrol. We moved in to the Maltings estate and Maltings Court, Dengie Close & Pattison Close. There were very few people out during the evening with the River Walk only in use by wildlife. Patrol moved in to the Town Centre with a foot patrol in Witham Town Park to support the Rough Sleeper count where one person was located. This person has been provided with information to enable them to seek help and shelter and advised that they cannot stay in the park. Following this the patrol moved from the town up to the Forest Road area where after checking the recreation ground, we disrupted drug related activity near to the end of Cypress Road. A police information report has now been submitted again for this location due to repeated behaviour and will be patrolled frequently. Further checks around Cut Throat Lane & Motts Lane ensured that the persons involved were cleared from the area. Due to the availability of the police vehicle we were able to return to several of the previously identified areas of Witham over the course of the shift and I am pleased to report that Witham did not have any reported incidents for us to attend.





29th November

One of our officers conducted a foot patrol which covered over 11 miles starting off at 10:00 hours on the Templars estate before cutting through Dorothy Sayers Road to the recreation ground. Moving on to Yew Close, Elderberry Gardens & Mulberry Gardens before gathering some intel near to Cypress Road which will lead to targeted patrols in the area to prevent drug related behaviour. We also gained further intel on potential drug dealing and this will be investigated further. From Cypress Road the officer moved down to Chalks Road and up Church Street and on to the River Walk. Travelling along the River Walk to Bramble Road, Chipping Hill and then up to Spa Road. He then called in at the CO-OP and on to the Humber Road estate, checking the area around Douglas Grove Surgery. He then headed down to the fields adjacent to the Rugby pitch for a welfare check after a report that people may be sleeping in a tent nearby. Although there was no-one located a report has been submitted for the area. After this the officer then headed towards ASDA before returning to the River Walk, on to the Duck Pond and then in to the town. After a patrol through the Newlands Precinct and Grove Centre, he then moved on to the Witham Town Park leading down towards Pattison Close, Pelly Avenue, Dengie Close and Wickham Road before heading on to the Hatfield Road estate. After covering the estate including the shop area, he then headed over to the Maltings/Gershwin estate cutting through the middle and up towards Haygreen Road. After a brief check-in at the CO-OP garage he then returned down Hatfield Road and in to the town centre. The officer reported lots of positive engagement with many members of the public and hopefully provided some visibility and reassurance to the residents of Witham.



This concludes the monthly report for November 2020.

30th November 2020