

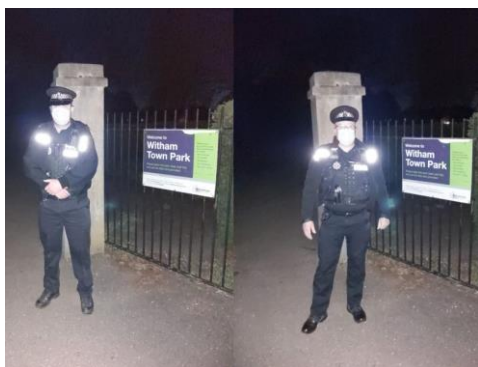


## **May 2021 Patrols**

Further relaxation of the social distancing guidelines in May finally allowed more people to meet inside and outside and this saw an increase of people back in the town centre during the days and evenings. We continued to provide high visibility patrols in key areas of previous anti-social behaviour and carried out speed checks and night time patrols due to an increase in catalytic converter thefts and vehicle thefts across the County.

### **May 6<sup>th</sup>**

During this evening patrol Acting Sergeant Mabey & Myself carried out foot patrol in the town park and River Walk continuing through to Newland Street with no issues or concerns. We then carried out mobile patrols around the different estates including Hatfield Road, Maltings/Gershwin, Forest Road and the Courts. During our time on the Humber Road estate, a suspicious vehicle was spotted at the rear of a garage block and details were recorded for further intelligence dissemination. We also visited both sides of the Witham Train Station after recent anti-social behaviour but pleased to report no concerns during our patrol. With additional vehicle stops due to driving concerns and repeat checks on previous anti-social behaviour areas we finished our shift.

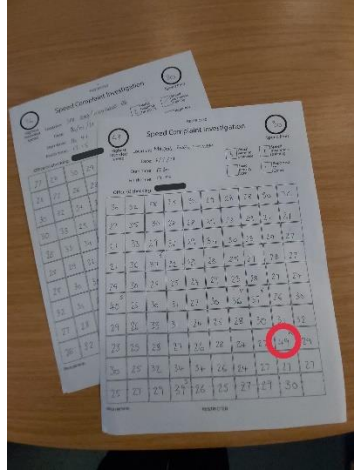


### **May 7<sup>th</sup>**

After seeing several vehicles speeding on Spa Road & Maldon Road recently during our patrols, coupled with reports on local social media, I focused my patrol with 2 speed checks. In each position I carried out a check on 100 vehicles to determine a snapshot of typical speeds at a given time. During the checks on Spa Road I provided words of advice to a small number of drivers but generally due to my presence on the side of the road the speed limit was met by the other drivers. Unfortunately, this was not the same on Maldon Road which saw several tickets issued including one driver measured at 49mph in the 30mph limit. These speeds are completely unacceptable, and the driver has been reported. One of the positive comments I received from a resident was the reduction in noise associated with the



speeding on Maldon Road due to my presence. It was also Polling Day for local elections and to support this I carried out Polling Station checks until they closed.



## May 9<sup>th</sup>

With Special Constable Eaketts, we commenced our foot patrol starting on the Templars estate and we were surprised how very few people were outside. With the park and Courts areas empty, it was nice for a Mother & Son to come out and say hello as we walked by. After a brief chat with a possible future officer, we headed back to our vehicle and on to Forest Road and Cypress Road. With no concerns in these locations we moved in towards town and got out on foot to walk along Maldon Road, The Grove, Greenfields, Blackwater Lane, River Walk and in to the Witham Town Park. In the park we found two men who were involved in drug related activity and following a stop search a small quantity of drugs was seized for destruction. A Community Resolution was issued to the man found in possession which provides conditions to prevent this from reoccurring with support offered for drug & alcohol prevention services.





## May 12<sup>th</sup>

I carried out my patrols around Witham covering large areas of the town as shown on the map, “PC Rain” (a term derived from bad weather keeping most people from venturing outside) was present for most of the shift and this kept the roads relatively clear. I visited each of the previous sites for anti-social behaviour and in each case, there were no concerns or evidence of ongoing issues. Please continue to report any further cases so that we can focus on targeting this to improve your community. I have received some positive feedback from residents in areas previously affected and this demonstrates that with your help we can make a difference.

<https://www.essex.police.uk/ro/report/asb/asb/report-antisocial-behaviour/>

Due to my presence in Witham I was able to help at a medical emergency and arrive first on scene with a Community First Responder before both Ambulance & additional Police units arrived. Fortunately, I was also able to assess the medical emergency due to previous experience in my personal life. Following checks on board the Ambulance the patient was returned home in the care of family and I resumed my patrol. With no further incidents during the evening and the continuing rain I headed back in to the town centre before completing my shift.



## May 15<sup>th</sup>





Once again crewed with SC Eaketts we were tasked to support an ongoing Essex Police operation checking on licensed premises to ensure that people who had ventured out for the evening were meeting the COVID guidelines. After an initial patrol in Hatfield Peverel we remained in Witham for the rest of the shift. Once the rain started however it didn't seem to stop for 4 or 5 hours and once again this dampened most people's spirits with many pubs and bars empty due to the rules of having to remain outside. The roads, however, were still busy and we were called to assist with a car that had aquaplaned on the A12 just before Witham. We were responsible for driver safety and set up the necessary lane closure until recovery arrived. It was a very wet few hours but fortunately the car was recovered, the driver was uninjured and there were no further reported incidents. We returned in to Witham to dry out and carried out our patrols on the Gershwin estate, Hatfield Road estate, Humber Road estate and up on to Flora Road. As we approached the end of our shift in the early hours of Sunday morning a report for a missing person was received and we headed back towards the train station and surrounding area to carry out searches. Fortunately, the rain had paused long enough for us to get out on foot near to Eastways Industrial estate but even from the higher vantage point on the footbridge we were unable to locate the person. Later it transpired that our checks were just precautionary after further information showed that the person was not in Witham.





On my arrival in Witham I parked up in Newland Drive and headed across to the Witham Hub where the volunteers were busily restocking the food ready for the following days. I then attended the Community Council Meeting at the Town Hall to present our latest patrol report and to answer questions regarding electric scooters.

<https://www.essex.police.uk/news/essex/news/news/2020/december/e-scooters/>

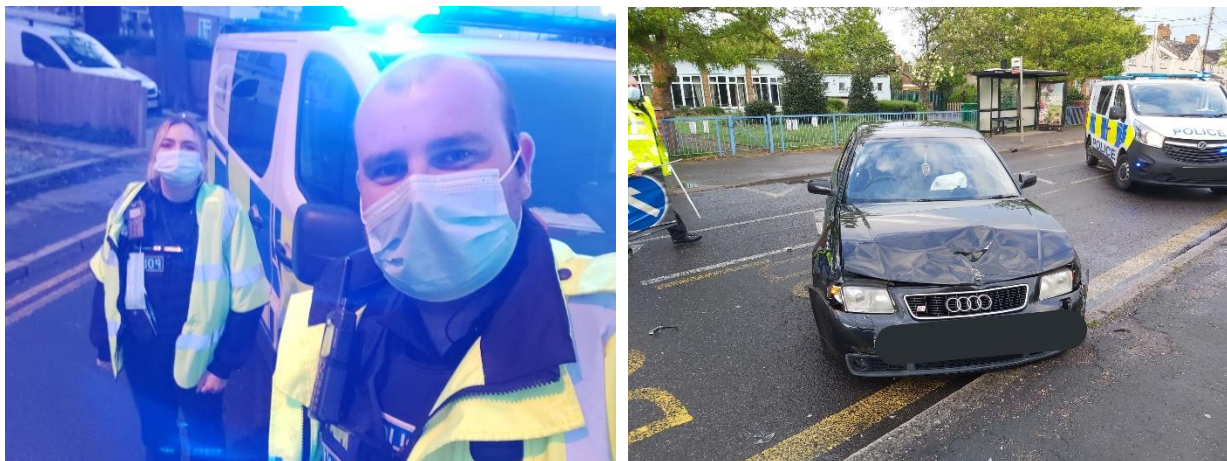
With the relaxation of the COVID restrictions, people were allowed back inside restaurants, pubs and bars and so I made sure to drop by and say hello to the staff and to provide feedback to the Licensing teams who were checking that the new softer guidelines were still being met. I first visited The George, who had been waiting to reopen for this day and then moved across the road to The Red Lion. After heading down Newland Street I stopped by The White Hart and after a catch up with the Landlord I walked down Maldon Road and through the Witham Town Park before continuing down Newland Street to The Swan. A short chat with the Landlady and then up to Battenford Court, where we discussed the welcome changes and the anticipated increase in trade as we progress towards the exit of the lockdown. I walked back up Newland Street, passing Charlie's Bar which was due to open on the 19<sup>th</sup> and then through Newland Precinct. With my shift ending I called in to The White Horse on Chipping Hill and The Cherry Tree on Cressing Road. At each visit I was made to feel welcome and we will continue to drop in and support whenever we can.



## May 19<sup>th</sup>

Witham CSC Officers Acting Sergeant Mabey and Special Constable Keyse were crewed up to conduct high visibility patrols in Witham, shortly after arriving in Witham they were first on scene to a serious road traffic collision (RTC) on Cressing Road near to the Templars School. One of the vehicles had been travelling at speed and struck another resulting in injuries for one of the driver's which required medical attention. In closing the road, the officers ensured the safety of the casualty and the attending ambulance crew. The driver of one vehicle fled the scene and further enquiries are ongoing.





After the road was re-opened, they concluded their patrols including Spa Road and Humber Road and disrupted potential drug activity on the River Walk near to Highfields Road. An intelligence report has been submitted for this with future patrols planned.

### **May 21<sup>st</sup>**

I initially conducted patrols through the Town with foot patrol in the Witham Town Park and then down towards the River Walk before heading back up through The Grove Centre and Maldon Road before driving over to the Spa Road park. Once again, I was out on foot and walked through Brent Close, Helford Court, Ness Walk & Teign Drive before heading across to the field adjacent to the Rugby Club. I was pleased to see that there was no recent evidence of the littering and anti-social behaviour that had been reported previously. As I was leaving the area a person on a distinctive mountain bike appeared to make a deliberate movement to avoid me and I moved my patrol up to the Hatfield Road estate in the direction of his travel. I found the rider talking with another person outside the shops and he immediately rode off again before I could intercept. I believed this was due to drug related activity and therefore I continued to patrol the Hatfield Road estate on foot and in my vehicle. Over the course of the evening I recorded several vehicles and suspicious activity which provided further intelligence in relation to drug dealing and this was evidenced following a successful vehicle stop. The driver admitted that they had just purchased the Class B drug and was dealt with by means of a recordable warning, the driver was also issued a traffic ticket for no valid MOT certificate.





#### May 24<sup>th</sup>

I initially started my patrol in Witham with Community Policing Team Sergeant Metcalfe where we carried out house to house enquiries following an assault that took place during the previous weekend. An investigation has been initiated and any further information can be reported to Essex Police using the reference **42/96795/21**. We were also able to secure CCTV which will be used to support this investigation. We would like to thank people for coming forward and talking to us in relation to incidents like this where they have been affected in their community. Following this, I was required to support Essex Police out of area and unable to return to Witham until just before midnight. On my return to Witham I carried out patrol around the Train Station, Station Road following recent reports of suspicious behaviour near to Bairds Malt works and returned to Church Street before finishing off the mobile patrol on Cypress Road & Forest Road.



#### May 25<sup>th</sup>





The start of this shift saw more visible patrols on Church Street before collecting a number of tool boxes that may have been discarded following a crime. An appeal on social media has been launched to try and determine the owner so these can be returned. If you have any information regarding these then please contact Essex Police quoting reference **EP-20210524-0645**. I carried out foot patrol from the Witham Town Park, through to Blackwater Lane and up the track to Greenfields before returning to my vehicle on Maldon Road. Over the course of my shift I attended previous anti-social behaviour locations identified by residents but pleased to report no ongoing issues. Later in the evening I was able to issue some bicycle lights to two teenagers courtesy of the Safer Essex Roads Partnership (SERP) <https://saferessexroads.org/> who have provided these to help with visibility and road safety. My patrols took me back on to the Eastways industrial estate to provide some visibility and reassurance before heading back to the Town Centre. After returning to Braintree Police station to book in property I then headed back to Witham to support officers following a report of criminal damage. While supporting this incident I was also available to assist an Essex Police traffic unit who had followed a vehicle that had failed to stop and carried out an area search after the driver ran off leaving their car.



May 29<sup>th</sup>





Starting out in the morning, Special Inspector Campbell deployed on foot patrol and covered a significant area to provide visibility and accessibility. The following areas were part of his patrol, Spa Road including the COOP, Flora Road, Honeysuckle Way then onto the River Walk and up to Ebenezer Close, Church Street, Chalks Road and up to Cressing Road to Templars Academy. From here he moved through the Templars estate passing the park and shops up to New Rickstones Academy then on from here to Rickstones Road, Dorothy Sayers Drive and through the Recreation Park. Along the way there were multiple engagements with residents who were very pleased to see an officer 'on the beat' and felt it provided reassurance. He then walked down Chipping Hill to the River Walk and up Guithavon Valley to Collingwood Road and in to the Town Centre. Finally he entered the Newlands Precinct before crossing the road in to The Grove, Witham Town Park, back down to the River Walk parallel with Howbridge Road and finished off near to the Duck Pond. During the patrol he did call up to offer his support for another high risk missing person, however, this person was located before he had to deviate too much. The Inspector was also spotted by a member of public on Honeysuckle Way and after they posted a picture to a local Facebook Group this once again demonstrated the benefits of visible policing on foot.



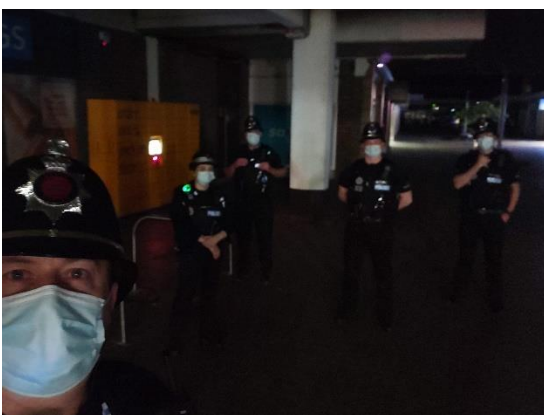
For the evening, Acting Sergeant Mabey, Special Constable Keyse and Myself of the Witham CSC team were on shift and joined by 2 Braintree Specials for increased visibility across the Town and estates. When we arrived in Witham we immediately supported the search for a high risk missing person from the Witham area. With a number of additional units including Braintree Local Policing Team, Traffic Units and the Operational Support Group the person was located by Acting Sergeant Mabey on the River Walk. The local knowledge of the Witham team is extremely valuable in situations like this and we were pleased to be able to support and get the person the help they required. We would also like to thank members of the public who were out walking who also offered their support. Following



this incident I was able to visit each of the pubs & bars in Witham to provide a guidance letter ahead of the Euro 2021 Football, which provides some guidance on trying to minimise any anti-social behaviour or other types of incidents when showing the football in their establishments. It was a good opportunity to once again have some positive engagement with the staff and managers. The other part of the team went out to conduct high visibility patrols and covered the River Walk, Spa Road park, Witham Town Park and The Grove Centre & Newlands Precinct. Our presence was welcomed in the town and we then headed out to some of the estates including Hatfield Road estate and Humber Road estate. As the evening progressed we covered more and more areas of the town until one of the ANPR cameras notified us of a stolen vehicle entering the town.

Fortunately I was in the right location to see the vehicle and I then followed this to Little Baddow where it was successfully stopped. With support from the rest of the Witham CSC team and a Traffic Unit the driver was informed of the report and this is now being dealt with by the investigating officer.

We were also able to utilise the CCTV device provided by Witham Town Council to support our patrols, and it helped to identify a number of people in an incident in the high street enabling officers on arrival to speak with the involved parties. This tool links us to the Town CCTV system and can help with deployment and initial assessment.





The weather had changed significantly and the sun was shining brightly as Special Inspector Campbell and Myself began our shifts this morning. With the Inspector commencing foot patrols in the Whetmead Nature Reserve, I set up with a speed measuring device on Maldon Road. As the Inspector walked up to join me I stopped the first of 5 drivers for excess speed. This stretch of Road from Laurence Avenue up to The Grove is a 30mph limit with residential properties each side. A pelican crossing sits at the halfway point and therefore it is important for drivers and other road users to respect the limit. The first 2 motorists stopped were both recorded at 39mph, following checks tickets were issued and these drivers may receive a warning in the form of a Speed Awareness Course which aims to provide further education on the risks associated with excess speed. If completed this course replaces the need for endorsement points on their licence. It is not applicable for all drivers depending on driving history and is determined by the Casualty Reduction Section and not the officer on scene. Over the course of an hour three more drivers were stopped for words of advice, however, there was a noticeable decrease in speed on the road and a reduction in noise.



With Inspector Campbell keen to resume foot patrols we moved up to Augustus Way where he went off in to the Maltings estate while I set up my position on Hatfield Road for vehicles travelling in towards the town centre. Unfortunately in this area the speeds were significantly higher with one recorded at 48mph in the 30mph limit. Three drivers were reported for their speed and this may result in points and a fine due to speeds far in excess of the posted limit. It is important to notice the road signs which on this approaching stretch of road change from 40mph to the 30mph zone as you enter the built up areas. All three speeds recorded were in excess of 40mph! A number of drivers were warned to slow down and this is important due to the crossing point which only has a small island in which pedestrians can stand. After approximately an hour in this location I met up with the Inspector on Haygreen Road where we removed a large number of nitrous oxide canisters and balloons which had been used for the purpose of a short term 'high' and then dumped carelessly. If you are aware of anti-social behaviour in your community please report this via the link shown earlier on this report.



My final speed checks were in the Town Centre and I set up opposite the Town Hall, in this location I was very visible to members of the public and I had many positive interactions, praising my time and action with many recognising that speeding along Newland Street is a problem and particularly unsafe with so many people crossing the road. Although I did not have to issue any tickets to any drivers on Newland Street my presence did seem to make a difference to the manner of driving and I was also able to offer directions to a number of bikers as they passed through town. I would also like to thank the young family who brought me a small lunch bag from a local shop to say thank you for my presence. Inspector Campbell was kept busy on his foot patrol in The Grove centre with an incident involving a young child and a mobility scooter and even though ambulance attended it was determined that this accident did not require further action. I returned to my vehicle and just as I thought about my lunch the radio chirped and notified me of an ANPR activation on a vehicle coming in to Witham along Cressing Road. It was only a minute later that I positioned myself behind this vehicle and followed it through Witham while I waited for additional support. Eventually we stopped near to Maltings Lane and I carried out a search of the vehicle while a support unit from Braintree Local Policing Team searched the driver. In this instance everything was in order and we were able to complete a report and let the driver continue on their journey. These stop and searches are important in order to prevent crime with many yielding significant results.





Following the stop, the Inspector finished his patrol and I then swapped my vehicle for foot patrol. I parked on Cypress Road and covered 14250 steps around the Forest Road estate before moving over to the Templars estate, along Cressing Road, up Cross Road and across to Dorothy Sayers Drive before entering the Recreation Ground and back to my vehicle. To complete my afternoon patrols I headed up to the Hatfield Road estate where I investigated some suspicious activity related to drug supply. After gathering some information I then drove over to Humber Road before finally heading back to hand over my vehicle to the next shift.



This concludes the monthly report for May 2021.