

Witham Christmas Fayre





Page 3
Sunday Cinema

Page 4
Witham Christmas
Fayre 2023

Page 6
The Witham Voucher
Scheme

The Town Mayor's Christmas Message

I would like to wish you all a Merry Christmas and a Happy New Year.

In these difficult times, we need to stick together as a Community, helping those who need it.

Please remember there is help out there and there is no need to spend Christmas Alone.

Come into our Information Centre for contact numbers for those organising Christmas Lunch.

The Mayor of Witham, Councillor Susan Ager



SUNDAY CINEMA

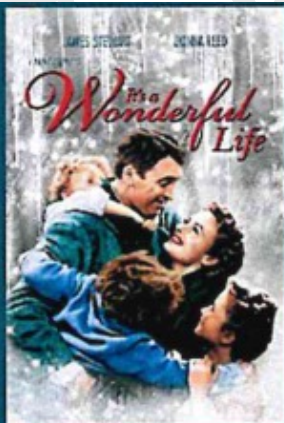
Calling All Movie Lovers! Join Us for a Timeless Classic at Sunday Cinema!

Venue: Witham Royal British Legion Hall (CM8 2AZ)

Doors Open: 2:00 PM

Film Starts: 2:30 PM

Admission: £1 (Includes Tea/Coffee & Biscuits)



10th December 2023

IT'S A
WONDERFUL LIFE

James Stewart
and Donna Reed

HAVE YOU BEEN FEELING ISOLATED?



You do not have to feel alone any longer. Witham Town Council isn't just your local authority, it is also a safe space for all citizens, whatever the weather.

If you are feeling lonely and need some company, why not pop into the Information Centre for a chat and we could provide you with a list of clubs and social groups in the area. You may then find some like-minded individuals.

WITHAM CHRISTMAS FAYRE

Witham is gearing up to embrace the spirit of merriment and joy with the highly anticipated Witham Christmas Fayre. Mark your calendars for Saturday 2nd December as Newland Street transforms into a winter wonderland from 3:00 PM to 7:00 PM, culminating in the enchanting Christmas light switch-on ceremony at 6:00 PM.

What to Expect:

Festive Atmosphere: Newland Street will come alive with twinkling lights, vibrant decorations, and the joyful sounds of the season. Get ready to immerse yourself in the holiday spirit as you stroll along this picturesque street.

Delectable Delights: Indulge in the finest culinary delights as local vendors offer a tempting variety of food and drink. From seasonal treats to savoury delights, there's something to satisfy every palate.

Gift's Galore: Discover the perfect presents for your loved ones among the charming gift stalls. Whether it's unique handcrafted items, stylish accessories, or artisan goods, you're sure to find something special.

Crafters' Corner: Step into the warm embrace of the United Reformed Church, where the 'Crafter's Corner' awaits. Explore a diverse range of craft stalls featuring beautifully made crafts that make for ideal holiday gifts or delightful treats for yourself.

The Highlight of the Evening: At 6:00 PM, gather around as we illuminate the town with the dazzling Christmas light switch-on ceremony.

This event is sponsored by

Holmes & Hills
SOLICITORS

This year Santa's Reindeer will be available to meet in The Grove Shopping Centre during the Christmas Fayre



CHRISTMAS

Carol Service

SATURDAY, 2ND DECEMBER 2023
PRIOR TO THE WITHAM CHRISTMAS
FAYRE
IN THE GROVE SHOPPING CENTRE
COMMENCING AT 2PM



WITHAM GIFT VOUCHER SCHEME

Witham Gift Vouchers make an excellent gift choice for Christmas or other special occasions. Whether used to indulge in lunch or dinner, a night out or some new clothes, the best reason of all to use Witham Gift Vouchers is to support local Witham businesses. By spending in Witham, your money stays within the local economy and helps to boost the town.

Witham Gift Vouchers are available to purchase from Witham Information Centre in multiples of £5 and £10 and are valid for 12 months. A list of participating businesses can be found on our website.

If you run a business in Witham and are interested in taking part in the scheme, please contact 01376 520627 or email assistantrfo@witham.gov.uk



CHRISTMAS IN THE INFORMATION CENTRE



The Information Centre will be transforming to a festive wonderland this Christmas, so make sure you pop in for some fantastic gift ideas!

We have a wide selection of Wilkin & Sons products, including their delicious individual Christmas puddings and gift selections. We also have our Witham calendar with images of local landmarks provided by residents. This is available for just £6 and is the perfect gift for anyone who loves Witham.

All of our items can be made into a beautifully wrapped hamper, with gift wrapping available for just £1.25. The Information Centre will be open from 3pm to 7pm on Saturday 2nd December as part of Witham's Christmas Fayre.

COMMEMORATIVE SCHEMES

Christmas can be an especially hard time for those who have lost a loved one. If you are looking for a way to provide you and your family with a lasting tribute, Witham Town Council's commemorative schemes may be able to help you with this.

Commemorative Bench Scheme

The purpose of this scheme is to provide members of the public a means of remembering a loved one with a lasting tribute. A commemorative bench can be dedicated to a special person and installed in one of Witham Town Council's open spaces, while also improving the availability of public seating across the town.

You can choose to have a bench in areas of The River Walk, Whetmead Nature Reserve and James Cooke Woods. Your preferred location can be chosen from a map available in the Town Hall.

When your bench is installed, a ribbon cutting ceremony can be held for you, family and friends to mark the occasion, if you wish. We can also provide you with copies of photographs of the occasion for you to keep.

For more information and to take part in this scheme, simply contact Witham Town Council on 01376 520627 to discuss.



The Pet Commemorative Bench Scheme

This enables a memorial plaque to be purchased in memory of a beloved pet which will be placed on a dedicated bench on Witham's River Walk. Dogs that regularly walked along the River Walk can be fondly remembered at the place that they loved.

The Pet Commemorative Bench will display multiple engraved stainless steel plaques in memory of cherished pets. The cost of the scheme is £60 per plaque.

HAVE YOUR SAY

This is a chance for you to have your say on Witham Town Council events. Fill in the form below, and return this to Witham Town Hall by Friday 22nd December 2023. You can also fill the form in on online on our website:

<https://www.witham.gov.uk/>

What has been your favourite Witham Town Council event to date?

Witham Festival (Puppet Festival)

Spooktacular Trail

Dog Show

Easter Trail

Christmas Fayre

Music Festival

Community Day

Teddy Bears Picnic

Why was this your favourite event?

What events would you like to see in the future?

How do you think our events can be improved?

WITHAM TREE GROUP

Tree planting is a key part of the Government's plan to combat climate change and achieve net zero carbon emissions by 2050. The UK's target is to plant 30,000 hectares of new woodland each year by 2025. The majority of trees that need to be planted to achieve this target will be whips, which are small one year old saplings.

Here in Witham we are blessed with many superb mature trees, many protected, with Tree Protection Orders (TPOs). Now more than ever we must ensure that no healthy mature trees are felled without a very good reason.

Perhaps by chance rather than design, Witham is also very much in tune with Government policy on woodland creation. A little over 30 years ago Witham Town Council purchased a 14-acre (5.67 hectares) plot of land to the east of the town and with funding from the Forestry Commission planted a community woodland.

James Cooke Wood is now maturing into a fine asset that Witham Town Council continues to own and manage, and it is beginning to have a serious impact on mitigating climate change, as well as providing an area of quiet for local people.

The woodland was planted using British trees local to the area to a design by the late and greatly missed Mel Crowe, at the time Tree Officer at Braintree District Council. Areas of open grassland within the wood also provide a wide range of habitats for birds, butterflies and other wildlife in which to flourish.

For the past ten years the Witham Tree Group has been doing its best to add to the tree cover of our town. We are now planting each year around 70 semi mature trees. Our principal supplier produces trees with a root structure that is not spiralled or tangled as is often the case in container grown plants; this enables the trees to establish quickly. Some of our earlier plantings now have a girth that suggests that they are already locking in significant amounts of carbon.

It is not only for their carbon capturing abilities that trees are of value in a residential environment, they release oxygen and help filter pollutants from the atmosphere and of course in our increasingly hotter summers they provide essential shade. The value of trees cannot therefore be underestimated.

If you would like to know more about the Witham Tree Group or would like to help us in this work that we feel is so important to the wellbeing of our community, please take a look at our website at www.withamtreegroup.org.uk.

Allan Waight

WITHAM FESTIVAL

Witham Town Council is delighted to announce the overwhelming success of the 'Witham Street Entertainment Festival' held on Saturday, 16th September 2023. The festival saw an incredible turnout, transforming the town into a lively hub of excitement.



We would love feedback from you regarding this event, whether it be what you liked, or things we can do better.

Please get in touch on 01376 520627 or via events@witham.gov.uk.

HOW CAN YOU GET INVOLVED?

Essex Police Community Special Constables

Are you passionate about safeguarding your community and making a positive impact on the lives of others? If so, joining Essex Police as a Community Special Constable might be the perfect opportunity for you! Become a Community Special Constable with Essex Police and make a difference in your community

What is a Community Special Constable?

A Community Special Constable is a dedicated volunteer who works alongside regular police officers to maintain law and order in local communities. These individuals are committed to making a difference by promoting community safety, assisting in emergencies and tackling issues with crime. By becoming a Community Special Constable, you become an essential link between the police and the public, fostering trust and cooperation.

The Role of a Community Special Constable in Witham:

As a Community Special Constable in Witham you'll have the opportunity to engage with the community on a deeper level. Your duties may include patrolling neighbourhoods, attending community events and providing a visible police. By building relationships with residents you'll gain valuable insights into local concerns, ensuring that the police can address specific issues effectively.

Why Should You Apply?

Becoming a Community Special Constable allows you to actively contribute to a safer and more cohesive community. By volunteering your time and skills you can directly influence the lives of your neighbours, friends and family members, fostering a sense of unity and security.

How to Apply:

Ready to take on this exciting challenge? Applying to become a Community Special Constable is straightforward. Visit the official Essex Police website:

<https://www.essex.police.uk/police-forces/essex-police/areas/essex-police/ca/careers/special-constabulary/>

Support from Witham Town Council:

Witham Town Council is proud that we were the first local council to 'go live' with the Community Special Constables Scheme. This was the first such scheme in Essex (and possibly the first of its kind in the country). This was the result of close co-operation between Essex Police and Witham Town Council over a long period of time and sees the Council funding any expenses for our volunteer police officers to be based in the town. Witham Town Council continues to work closely with Essex Police to support Witham's Community Special Constables.



TOWN HALL AND INFORMATION CENTRE

**61 Newland Street, Witham, Essex,
CM8 2FE**

Witham Town Council Offices are open
Monday – Thursday 9:00AM–5:00PM and
Friday 9:00AM–4:00PM.

The Information Centre in the Town Hall
is open from 9:00AM–4:30PM Monday,
Tuesday and Thursday, 10:00AM – 4:30PM
Wednesday and 9:00AM – 3:50PM Friday.

Both are closed Weekends and Bank
Holidays.

Meetings of your Town Council are open
for you to attend.

Full details are displayed at
www.witham.gov.uk

Agendas are on display on the
noticeboard in Newland Street.

Meetings usually begin at 7:30PM and
Planning Applications & Transport
Committee meetings at 6:30PM. These
are held in the Council Chamber at the
Town Hall.

**For further information please contact
the Town Hall:**

Office: 01376 520627 (Op 2)
townclerk@witham.gov.uk

Information Centre: 01376 520627 (Op 1)
infocentre@witham.gov.uk

YOUR COUNCILLORS

CENTRAL WARD

Barry Fleet: cllr.b.fleet@witham.gov.uk
Ross Playle: cllr.r.playle@witham.gov.uk

WEST WARD

Susan Ager: cllr.s.ager@witham.gov.uk
Jack Coleman:
cllr.jack.coleman@witham.gov.uk
Ron Ramage: cllr.r.ramage@witham.gov.uk
Artur Sloma: cllr.a.sloma@witham.gov.uk

SOUTH WARD

Joan Coleman:
cllr.joan.coleman@witham.gov.uk
Jacqueline Martin:
cllr.j.martin@witham.gov.uk
Paul Heath: cllr.p.heath@witham.gov.uk
Tom Hewitt: cllr.t.hewitt@witham.gov.uk

NORTH WARD

Phil Barlow: cllr.p.barlow@witham.gov.uk
Leanora Headley:
cllr.l.headley@witham.gov.uk
Billy Taylor: cllr.b.taylor@witham.gov.uk
Ethan Williams:
cllr.e.williams@witham.gov.uk

HATFIELD WARD

Emmanuel Adelaja:
cllr.e.adelaja@witham.gov.uk
Lucy Barlow: cllr.l.barlow@witham.gov.uk