

# WITHAM'S VOICE

SPRING 2023

ISSUE 84



**Witham**

town council

## CHURCHES TOGETHER IN WITHAM & DISTRICT - EASTER SERVICES 2023

### 2 April - Palm Sunday

- 9.30 am Passion Drama & Holy Communion  
St Nicolas Church (CofE)
- 10.00 am Mass & Blessing of Palms  
The Holy Family & All Saints Church (RC)
- 10.30 am Morning Worship  
with mini, kids and youth church  
United Reformed Church
- 6.00 pm Music and Reflections  
St Nicolas Church (CofE)

### 6 April – Maundy Thursday

- 7.30 pm Communion  
with Valley Church  
Rickstones Church
- 8.00 pm Last Supper service in an upper room  
United Reformed Church
- 8.00 pm Passover Meal  
St Nicolas Church Hall (CofE)
- 8.00 pm Mass of the Lord's Supper  
The Holy Family & All Saints Church (RC)



### 7 April – Good Friday

- 9.45 am Good Friday Service  
Methodist Church
- 10.30 am Easter Messy Church for families with  
children - free tickets from the website  
United Reformed Church
- 10.30 am Good Friday Service in the Sanctuary  
followed by hot cross buns  
United Reformed Church
- 10.30 am Good Friday Service  
with Rickstones Church  
Valley Church
- 12 noon Good Friday Liturgy  
1-3 pm The Way of the Cross (Biblical Stations)  
Both at St Nicolas Church (CofE)
- 3.00 pm Solemn Liturgy of the Passion of the Lord  
The Holy Family & All Saints Church (RC)

### 9 April – Holy Saturday

- 8.00 pm Paschal Vigil  
The Holy Family & All Saints Church (RC)

### 9 April – Easter Day

- 6.00 am Easter Vigil  
St Nicolas Church (CofE)  
Followed by croissants at Rectory
- 9.00 am Mass  
The Holy Family & All Saints Church (RC)
- 9.15 am Easter Breakfast  
United Reformed Church
- 9.30 am Festival Eucharist  
St Nicolas Church (CofE)
- 10.30 am All-age Service of Celebration  
United Reformed Church
- 10.30 am All Age Worship with Communion  
Royal British Legion Hall, CM8 2AZ  
Baptist Church
- 10.30 am All Age Service  
Rickstones Church
- 10.30 am Easter Sunday Service  
Methodist Church
- 10.30 am Easter Sunday Service  
Bethel Christian Fellowship  
Wood End Farm, Hatfield Road, CM8 1EH
- 11.00 am Mass  
The Holy Family & All Saints Church (RC)
- 11.00 am Easter Sunday Celebration  
Valley Church
- 6.00 pm Easter Songs of Praise  
St Nicolas Church (CofE)

### Locations of the Churches

Valley Church  
Guithavon Valley, CM8 1HF  
United Reformed Church  
Newland Street, CM8 1AH  
Website: [www.withamurc.org.uk](http://www.withamurc.org.uk)

The Holy Family & All Saints (RC)  
Guithavon Street, CM8 1BN  
Rickstones Church  
Rickstones Road, CM8 2NG

Methodist Church,  
Guithavon Street, CM8 1BJ  
St Nicolas Church (C of E)  
Chipping Hill, CM8 2JS  
Bethel Christian Fellowship  
65 Church Street, CM8 2JH  
Website: [www.bethel-witham.co.uk](http://www.bethel-witham.co.uk)



# ESSEX COUNTY COUNCIL'S SALT BAG PARTNERSHIP

Essex County Council run a Salt Bag Partnership Scheme in association with Parish and Town Councils, as whilst they are responsible for keeping the road network clear as far as is reasonably possible, they do not clear footpaths. Witham Town Council will be signing up to the scheme, and will be distributing salt to volunteers to use on locations that are considered important to the community.

The Town Council are seeking reliable volunteers who are happy to store some salt and clear paths in their area. The Town Council do not have the resources for our Operations Team to carry out this work, and Essex Highways confirm that they will remain primarily liable, if the Town Council and volunteers are willing to assist with snow clearance. Snow clearing guidance will be given to volunteers.

Further information can be found at <https://www.essexhighways.org/roads-and-pavements/winter-travel/salt-bag-partnership>.

If you would like to be involved or have any questions please contact [openspacesadmin@witham.gov.uk](mailto:openspacesadmin@witham.gov.uk) or call 01376 520627.



2nd April 2023

9th April

## ON THE TOWN

Frank Sinatra, Gene Kelly,  
Grace Kelly



14th May 2023

## ROAD TO BALI

Bob Hope  
and Bing Crosby



11th June 2023

## THE PARENT TRAP

Haley Mills  
and Maureen O'Hara

## SUNDAY CINEMA

Don't miss your monthly Sunday Cinema taking place at the Royal British Legion Hall, Witham. Doors open at 2pm, film starts at 2.30pm and the entrance fee is just £1.

This is open for anyone and everyone, so don't hesitate to come along!

# COMMEMORATIVE BENCH SCHEME

The purpose of this scheme is to provide members of the public a means of remembering a loved one with a lasting tribute. A commemorative bench can be dedicated to a special person or even a much loved pet and installed in one of Witham Town Council's open spaces, while also improving the availability of public seating across the town.

You can choose to have a bench in areas of The River Walk, Whetmead Nature Reserve and James Cooke Woods. Your preferred location can be chosen from a map available in the Town Hall. When your bench is installed, a ribbon cutting ceremony can be held for you, family and friends to mark the occasion, if you wish.

We can also provide you with copies of photographs of the occasion for you to keep.

## What does it cost?

There are two different bench types to choose from -

### Option 1



A traditional Georgian style cast iron seat of very high quality with a metallic finish that will be treated to be resilient to acts of vandalism. The cost is £1,150 which includes installation, an engraved stainless steel plaque, and maintenance subject to terms and conditions.

### Option 2

A traditional wooden bench with a wood engraved inscription on the back rail. It is made from ethically and responsibly sourced teak. The cost is £715 which includes installation, engraving and maintenance, subject to terms and conditions.



# SOMEWHERE OVER THE RAINBOW

It is recognised that a much loved pet is very much a part of the family and owners may wish to remember them with a lasting tribute but the expense of purchasing a bench may be too costly.

The Pet Commemorative Bench Scheme therefore enables a memorial plaque to be purchased in memory of a beloved pet which will be placed on a dedicated bench on Witham's River Walk. Dogs that regularly walked along the River Walk can be fondly remembered at the place that they loved.

The Pet Commemorative Bench will display multiple engraved stainless steel plaques in memory of cherished pets. The cost of the scheme is £60 per plaque.

For more information and to take part in this scheme, simply contact Witham Town Council on 01376 520627 to discuss.

## Dog Bin Sponsorship Scheme

Would you like to help keep our town clean? Would you like to donate to a dog charity? Would you like to see a photo of your dog on your daily walk? If so, you may wish to sponsor one of Witham's dog bins on the River Walk, James Cooke Woods or Whetmead Nature Reserve.

A large photo of your dog will be placed on a selected dog bin reminding dog owners of their responsibility to clear up after their dogs. We will also arrange for a donation to go towards a dog charity of your choice. The scheme is provided at a fixed cost of £50 for one year with £15 going to the dog charity of your choice.

To take part in this scheme, Please email [openspacesadmin@witham.gov.uk](mailto:openspacesadmin@witham.gov.uk) or call 01376 520627.



# FOCUSING ON HEALTH

Witham Town Council has an 'Improving Healthcare Facilities in Witham' Working Group made up of representatives from Witham Town Council and Braintree District Council. This group works in partnership with NHS and health service providers in the town to facilitate the delivery of improved healthcare facilities in the town.

With ongoing pressures on the NHS nationally and the lack of GP doctors this is proving difficult but members of the group meet at least every six months to discuss how facilities in the Witham can be improved.

There is an increasing demand on GP doctors due to workloads and intensity of work and there is also a difficulty in recruiting and retaining GPs nationally. Information provided also shows that many GP appointments are unnecessary and that there are alternative services that may be better placed to provide help while also taking pressure off GPs. Some examples are -

- **NHS 111** can direct you to the best place if you think you need current medical help and can be accessed by call 111 or online at [www.111.nhs.uk](http://www.111.nhs.uk).
- **Pharmacists** can provide advice and treatment for minor conditions that do not need a prescription –

Pharmacies	Address	Telephone number
<b>Boots</b>	42 Newland St, Witham CM8 2AR	01376 513613
<b>Boots</b>	4 Spa Rd, Witham CM8 1NE	01376 513462
<b>Borno</b>	124 Newland St, Witham CM8 1BA	01376 520052
<b>Lloyds</b>	5 Newland St, Witham CM8 2AF	01376 512192
<b>Osborn</b>	Unit 1, 1 Potter Court Flemming Way, Witham CM8 2ZJ	01376 515045

- **Social Prescribers** can direct you to various services without the need to contact your GP. If you are living in Essex and aged over 18 you can access the service by calling 0300 303 998 (Monday to Friday from 8am to 7pm) or by emailing [live-well.linkwell@nhs.net](mailto:live-well.linkwell@nhs.net). Further information on the variety of organisations available can also be found on their website [essexwellbeingservice.co.uk](http://essexwellbeingservice.co.uk) – whether this is for support with social isolation, weight management or help with day-to-day needs, the service can help communities stay healthy, safe and well.

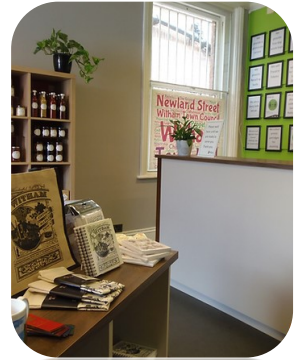
# WITHAM INFORMATION CENTRE

The Information Centre is a welcoming place in the heart of Newland Street. As well as being the reception for the Town Council, we provide a number of services, local gifts and products.

Well worth a visit, you might find a gift for someone special, or even yourself. We also sell and accept Witham Gift Vouchers.

In a world increasingly reliant on being able to go online we often find that we can help people with no access to navigate the internet.

We are happy to help volunteer-run clubs promote themselves with posters and leaflets, and we are often asked for such information by members of the public. If you run a local club or group, make sure we have the correct information to include on our information leaflets.



## Services:

- Local Information
- Local gifts and products
- National Express coach bookings and enquiries
- Local coach day trip bookings
- First Bus season tickets
- Reduced price day out tickets
- Recycling sacks
- Free dog waste bags
- Photocopying and printing
- Days out leaflets
- Self help leaflets
- Local clubs, groups and events posters & leaflets
- Public Hall event tickets
- Gift hampers

## Contact:

Tel No: [01376 502674](tel:01376502674)  
Email: [infocentre@witham.gov.uk](mailto:infocentre@witham.gov.uk)

or simply pop in and say hello. You will find us in Newland Street, opposite McColls and Helen Rollason Charity Shop, next to Barclays Bank.

## Opening Times:

Monday.....9am-4.30pm  
Tuesday.....9am-4.30pm  
Wednesday.....10am-4.30pm  
Thursday.....9am-4.30pm  
Friday.....9am-3.50pm

# KING CHARLES III'S CORONATION EVENT

After the success of the Queen's Platinum Jubilee Celebration, Witham Town Council decided that a music event dedicated to the coronation of King Charles III would take place on the River Walk on Saturday 6th May 2023, (time to be confirmed) with food, drink and entertainment for all the family.

**For more information on this event take a look at our social media or call 01376 520627**



**Witham**  
town council



@WithamTC



@WithamCouncil



@town\_Witham



## Some of the bands playing at the event are...



### The Stents

The Stents are a lively, hard rocking 5 piece Essex covers band, playing the best in footstomping classic rock, pop & indie. Prepare to party!

### The Fat Old Dad Band

Formed in May 1983 Fat Old Dad have been on the entertainment scene for 34 years and in this time they have appeared at many prestigious venues such as Arsenal Football Stadium and the 1500 seater Apollo Theatre Oxford to name just two.



### 6 String Makeover

Essex based four-piece Party Band. Providing a broad repertoire of musical genres ranging from Soul and Blues, Rock, Pop and Funk.

### Ginger and the Grizzly

Music duo from Essex. Playing originals and covers of artists such as The Rolling Stones, The Beatles, Fleetwood Mac and many more!



### Laura B and her band

The Band are a collection of the best authentic sounding rhythm and blues players in Europe whose credentials speak for themselves. Comprised of members from many bands who have played the circuit across the UK, Europe, USA and Asia.

# NEIGHBOURHOOD WATCH

## TOGETHER IN WITHAM WE CAN REDUCE THE OPPORTUNITY OF CRIME AND MAKE OUR SOCIETY SAFER BY BEING INVOLVED WITH NEIGHBOURHOOD WATCH

As you will agree Witham is a great place to live and is part of Braintree District which has the lowest crime levels in Essex. To keep it that way there are active Neighbourhood Watch schemes covering most of the District.

You may like to know that Braintree District Neighbourhood Watch Steering Group is affiliated to Essex County Neighbourhood Watch Association which is a registered charity and has more than 130,000 members in Essex. *Neighbourhood Watch is all about local people working together to create safe and friendly places to live, so that crime is less likely to happen.*

As the Neighbourhood Watch group has funding from The Police Fire & Crime Commissioner Roger Hirst we are able to provide window stickers, wheelie bin stickers, Nominated Neighbour Cards ( *these prevent anyone who may feel vulnerable, whatever their age, to open doors to visitors they do not expect*), No Cold Caller stickers, Promotional pens, Promotional Key Rings, Members Guides, Members badges, booklets on Home Security, Contactless card protector wallets, Security Door wedges and personal alarms. Also there is a six monthly newsletters by email and hard copy. In addition, there is also a weekly Braintree District Neighbourhood Watch newsletter (by email only) which keeps you up to date with local crime incidents and crime prevention advice from Essex Police.

*Neighbourhood Watch works locally with our Neighbourhood Policing teams to ensure that we receive information which helps to reduce crime.*

We always keep everyone's contact details confidential as any information is sent out bcc and we never use the Neighbourhood Watch database to promote any businesses or anyone's personal activities (charity fund raising) at anytime as we only distribute crime prevention information as this is covered under our Code of Ethics and the Data Protection Act. We only distribute information from reliable sources eg Essex Police, The Police Fire & Crime Commissioner's Office, Crimestoppers, Victim Support and Essex Fire & Rescue Service and never send out details of any suspicious people/incidents unless it is confirmed by Essex Police.

*It is also important to note that Neighbourhood Watch is FREE and if you want to be more involved as a local Co-ordinator it is really all about you giving what time you have in your busy lives especially in these difficult times too.*

Essex Police Chief Constable Mr.B.J.Harrington supports Neighbourhood Watch and believes that the more Street signs are seen the more it helps to reduce crime.

# Report by Clive Stewart, Chairman of the Braintree District Neighbourhood Watch Steering Group

Everyone is welcome to be part of Neighbourhood Watch whether or not you are on a computer or have no need for access to the internet. We are also keen to offer any Neighbourhood Watch information to those who may feel vulnerable and may have difficulties in communicating, are hard of hearing, visually impaired or deaf/blind. So please have someone contact us.

Finally I have been part of Neighbourhood Watch for over 28 years including being employed by Essex Police for almost six years and it is hoped that I can answer any questions you may have.

So if you are interested in receiving information being a part of Neighbourhood Watch where you live then I very much look forward to hearing from you.

Clive Stewart Chairman, Braintree District Neighbourhood Watch Steering Group

Email: [braintreenwsg@btinternet.com](mailto:braintreenwsg@btinternet.com)

Tel: 0750 8057636

Also Chairman Essex County Neighbourhood Watch Association

Why not look at what we do on our website and click on Braintree [www.essexnwa.co.uk](http://www.essexnwa.co.uk)

## Time to get walking again!

With Spring on its way we start to think about getting out to walk in the beautiful English countryside again, but where to find new and interesting walks?

Walking in Essex <https://www.walkinginengland.co.uk/essex> has loads of walks to download and print, free, it also has books of walks, details of all the walking groups in the county and much more. Whether you want to walk on your own or with a group all the information is there in one place.

John Harris (who maintains the website) said 'There is so much walking information on the web but it is difficult to find. Walking in Essex (part of the Walking in England website) has brought it together in one place so whether you are walking from home, or away on holiday, you will be able to find a walk suitable for you'.

With walks from half a mile to twelve miles plus long, and a note of suitability for pushchairs and wheelchairs, everyone can find a walk to enjoy. So home or away, check out the websites and get walking!

John Harris

[www.walkinginengland.co.uk](http://www.walkinginengland.co.uk)

[john@walkinginengland.co.uk](mailto:john@walkinginengland.co.uk)



## TOWN HALL AND INFORMATION CENTRE

Office: 01376 520627  
townclerk@witham.gov.uk

Information Centre: 01376 502674  
infocentre@witham.gov.uk

## 61 Newland Street, Witham, Essex, CM8 2FE

Witham Town Council Offices are open Monday - Thursday 9:00AM-5:00PM and Friday 9:00AM-4:00PM.

The Information Centre in the Town Hall is open from 9:00AM-4:30PM Monday, Tuesday and Thursday, 10:00AM - 4:30PM Wednesday and 9:00AM - 3:50PM Friday.

Both are closed Weekends and Bank Holidays.

Meetings of your Town Council are open for you to attend. There is usually an opportunity before the beginning of each meeting to speak directly to members of the council regarding current agenda items.

Full details are displayed at [www.witham.gov.uk](http://www.witham.gov.uk)

Agendas are on display on the noticeboard in Newland Street.

Meetings usually begin at 7:30PM and Planning Applications & Transport Committee meetings at 6:30PM. These are held in the Council Chamber at the Town Hall.

### FORTHCOMING MEETINGS

**Planning & Transport:** 3rd & 17th April and May 2nd

**Town Council:** 17th April, 2nd May

**Environment:** 3rd April

# YOUR COUNCILLORS

## CENTRAL WARD

**Michael Lager:** Tel: 01376 513747  
Cllr.m.lager@witham.gov.uk  
**Robert Williams:** Tel: 01376 510845  
Cllr.r.williams@witham.gov.uk

## WEST WARD

**Susan Ager:** Tel: 01376 512470  
Cllr.s.ager@witham.gov.uk  
**John Goodman:** Tel: 01376 516918  
Cllr.j.goodman@witham.gov.uk  
**Tom Pleasance:** Tel: 01376 501597  
Cllr.t.pleasance@witham.gov.uk  
**Sindhu Rajeev:** Tel: 07490 909902  
Cllr.s.rajeev@witham.gov.uk

## SOUTH WARD

**Kevin Atwill:** Tel: 07798 873544  
Cllr.k.atwill@witham.gov.uk  
**Chelsey Jay:** Cllr.c.jay@witham.gov.uk

**Paul Heath** Tel: 07734 320618  
Cllr.p.heath@witham.gov.uk

**Angela Kilmartin:** Tel: 01376 502872  
Cllr.a.kilmartin@witham.gov.uk

## NORTH WARD

**Philip Barlow:** Tel: 07774 196679  
Cllr.p.barlow@witham.gov.uk  
**Jack Bayford:** Tel: 07307 177163  
Cllr.j.bayford@witham.gov.uk  
**Steve Hicks:** Tel: 07836 690551  
Cllr.s.hicks@witham.gov.uk  
**Michelle Weeks:** Tel: 01376 515912  
Cllr.m.weeks@witham.gov.uk

## HATFIELD WARD

**Clare Lager:** Tel: 01376 513747  
Cllr.c.lager@witham.gov.uk  
**JoAnn Williams:** Tel: 07966 586574  
Cllr.j.williams@witham.gov.uk