



November 2025

The evenings are now getting darker, please check your vehicles to ensure your lights are functioning correctly. If you are out walking, please make sure you have a torch or suitable light with you, especially along the #RiverWalk, where lighting is limited to protect wildlife. If you are a runner or a cyclist, please make sure you can be seen and stay safe. When you are out shopping in the town, please be aware of your surroundings when in busy shops and keep your valuables safe and handbags secured and please continue to report any concerns.

For some general tips when you are out and about, please click on the link below.

[Personal safety: how to stay safe | Essex Police](#)

The Community Special Team are continuing the fortnightly Community Beat Surgeries, located outside The Witham Hub on a Saturday between 11am & 1pm and we are always pleased when people drop by if they have any concerns in their neighbourhood, seek advice or just say hello!

[Community Special Constables | Essex Police](#)

To report crime to Essex Police then please use the information at the bottom of this report. Thank you.

November 1st

I began my patrol visiting a resident on Bramble Road who had reported one of the firework incidents the previous evening to provide an update on the actions we had taken and to hopefully provide some reassurance. Before I carried out the Community Beat Surgery at The Witham Hub, I was out on foot patrol, visiting the Newlands Precinct where I met with stall holders and members of the public before heading down Newland Street and visiting a charity shop following an incident earlier in the week. Fortunately there had been no further incidents and I offered my reassurance that I was about in the town and their report was the right action for them to take. With a walk through the town park I began my beat surgery in the Grove Centre, meeting lots of people with several praising the difference in the policing response which had been successful in preventing significant incidents compared to previous years. In the afternoon I moved my foot patrols on to the Hatfield Road estate to provide visibility in response to recent police actions to disrupt drug supply.



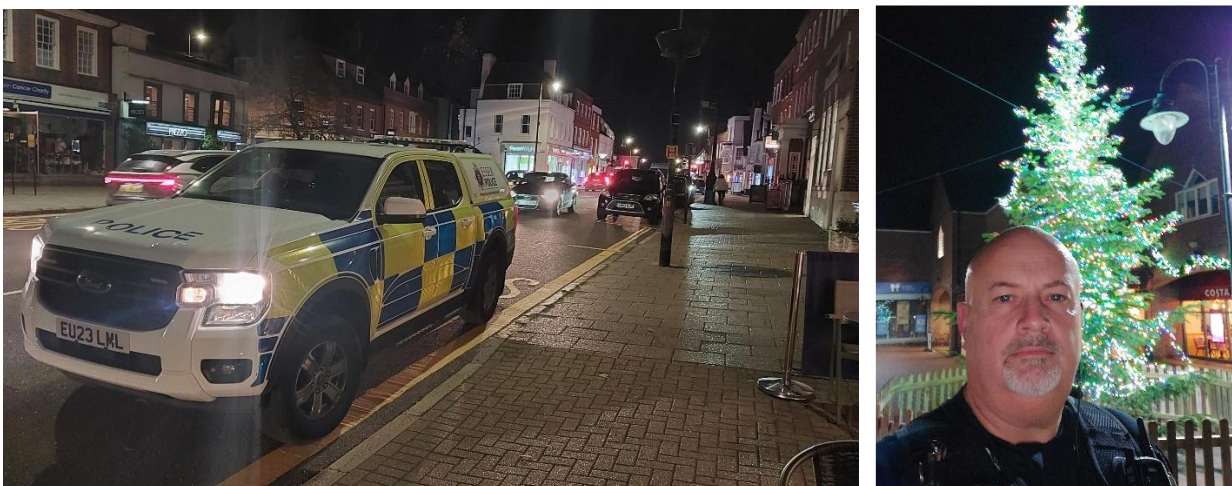
I extended my duty into the evening and in conjunction with the Neighbourhood Policing Team we continued our anti-social behaviour patrols within the dispersal order as the annual Witham Rugby Club Fireworks Display attracted residents and visitors to the area. Fortunately over the evening we had to attend very few incidents although one did

result in an arrest and children dispersed. To provide additional reassurance close to the event I conducted foot patrols with PCSO Williams engaging with families and children.



November 5th

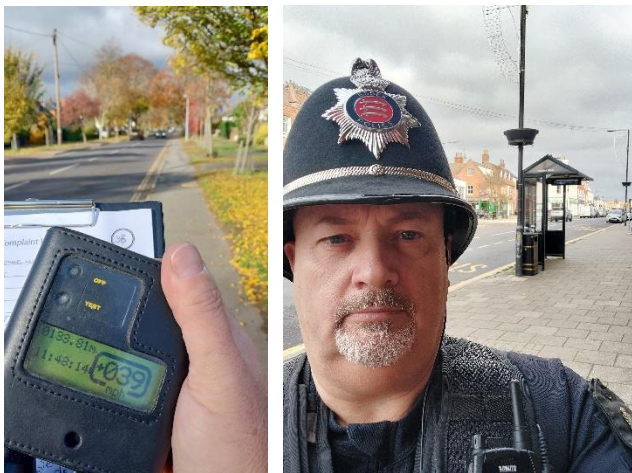
I joined the Neighbourhood Policing Team in Witham for the ongoing operation to target and prevent anti-social behaviour concerning children discharging fireworks in public in and around the town. Due to several minor incidents around the Bramble Road & Chipping Hill area a further dispersal order was put in place to ensure that we could easily disrupt any poor behaviour. In general, there were very few further reports over the evening, and I expanded my foot patrols around the town centre. While I paused near the Red Lion, I was alerted by a nearby shop staff member that there may be a person in distress outside the library and made my way to the location. There were several other members of the public that had stopped to assist including another off-duty officer and we were able to confirm that the person would require emergency medical care. With additional officers arriving to support, we waited with the person until the ambulance crew arrived to take over with a medical assessment.





November 8th

I began my duty with a speed check on The Avenue and with 100 vehicles checked I had to visually warn 11 drivers and stop 2 drivers who were issued traffic offence reports for measured speeds of 39mph in the 30mph limit. In these cases, the drivers could receive penalty points and a fine, but they may receive an alternative option with an educational course about the impact of speeding on road safety. With the check complete I headed into the town centre to conduct foot patrols, beginning in the Newlands Precinct and then on to Newland Street before visiting the Grove Centre and the Library. While in the town I was approached by a victim of a recent crime, and I secured additional evidence which will help the ongoing investigation.



I left Witham briefly to carry out a speed check on Feering Hill in Kelvedon following requests from residents about the perceived speed of vehicles and within 2 minutes of starting I did have to stop and issue a driver with a traffic offence report for 41mph in the 30mph limit.



[Community Speed Watch help record 301](#)
[speeding drivers | Essex Police](#)

I returned to Witham and Newland Street where I carried out further foot patrols in and around the town centre calling in at various stores to talk to staff about shoplifting and reporting crime.

My final location took me just outside Witham once again to Hatfield Peverel to follow up on a report of anti-social behaviour in a specified location and when I arrived, I disturbed a group who quickly dispersed from the area leaving behind evidence of recent drug use. An intelligence report has been submitted for further patrols.



November 9th

Witham commemorates Remembrance Sunday with an afternoon parade and service to remember everyone who have sacrificed so much for the freedoms we have today and those who have lost their lives protecting the freedom of others across the world. Each year the Witham Community Specials Team represent Essex Police and take part in the parade and lay a wreath. This year I was joined by Special Superintendent Lorne Campbell and Special Constable Connor Penrose. It is always a very humbling experience to be able to participate and the service by Reverend Jonathan Pritchard captivated a large crowd gathered at the War Memorial. LEST WE FORGET



November 10th

I was pleased to be able to attend the Witham Town Council Community Committee meeting along with our newest member of the Witham Community Constable scheme. Special Constable Penrose has been a Special with Essex Police for 5 years and has chosen to be part of the team here in Witham to increase visibility and reassurance across the town. Connor was presented with his Witham Town pin badge and hopefully you will see an increase in visible policing alongside the other team members. I followed this with a summary of the actions the team have carried out over the past quarter with topics including a reduction in anti-social behaviour involving younger members of the town and the focused actions that were taken by Essex Police, the Fire Service, council services and Community Groups over the Halloween and Bonfire Night. With the evenings becoming darker please make sure that you can be seen if you are out on the roads, check your lights and if you have any concerns then please make sure you contact us or visit one of our Community Beat Surgeries.



November 11th

I began by parking up on Conrad Road and heading out into the Courts on foot patrol, it was already dark and there were only a few people around, but I was able to engage positively before stopping at the local shop on Shaw Road. This is always a great opportunity to find out if there are any concerns or issues on the estate due to the shop becoming the most frequently visited location. Fortunately, apart from some parking issues on Shaw Road there were no policing matters, and I continued my patrol before heading back to my vehicle.



I conducted a brief mobile patrol around the Southfields estate and then drove through the centre of town before arriving in Hatfield Peverel. I have been asked to provide a presence in a specific area to combat anti-social behaviour and I am pleased to report, that unlike the previous Saturday, there were no issues. I did carry out a foot patrol around the recreation ground before I returned to mobile patrols in Witham.



I had knowledge of an earlier incident of shoplifting at the ASDA store and visited to provide reassurance and determine if there were any additional details to be recorded. I next drove up towards Flora Road but spotted a vehicle of interest potentially involved in drug supply which was travelling in the opposite direction. Although I initially lost track of the vehicle, I searched known previous locations and found it parked up. An intelligence report has been created for future action. I was then in the right place to help intercept another vehicle on Hatfield Road which had been seen leaving an address in the north of the town before seemingly trying to lose another police unit. The driver and passenger of the vehicle were searched, and further intelligence reports will be submitted.



November 15th

In the morning, I was first on scene to an address following a concern for the person's welfare, fortunately with the assistance of a neighbour and another unit we were able to gain entry to the property and found the person in good order, but they had been feeling quite low over the preceding week. We made sure we took time to listen and talk to the person before handing over our report to an ambulance crew that arrived as we were leaving. It was lovely to hear that the neighbour pops in from time to time for a cup of tea and a chat and this simple act of kindness can help someone through difficult times. It was then straight on to the next incident and immediately though my knowledge of Witham I was able to establish the people involved and direct searching officers to the probable locations across Witham. Fortunately, a vehicle of interest was located quickly and nearby all parties were found in a property and dealt with accordingly which resulted in one person arrested and taken in to custody.

My next location took me to the town, and I set up outside the Witham Hub for my Community Beat Surgery. It was surprisingly mild for mid-November and with Christmas just around the corner the town seemed very busy. This did result in a lot of people talking to me about concerns in their neighbourhood and I recorded a crime and received intelligence about drug supply and a suspicious vehicle. I did also speak with some children and there were a few people requesting photos with me...although I am sure it is just because I was wearing the traditional "Bobby's helmet"



With the Best surgery completed I set off on foot patrol around the town visiting stores and stall holders in the Newlands Precinct to provide visibility and reassurance. My final location took me to the Witham Train Station where I was able to assist with an ongoing incident that had begun at Braintree Train Station, but a witness had stopped in Witham to talk to British Transport Police. With knowledge of the incident and my colleagues' actions in Braintree I was able to update and coordinate between the witness and officers.

This would normally have been the end of the report for the day, but I was very pleased to hear that new Witham Community Special Connor Penrose went out on patrol in Witham during the evening. With an incident of anti-social behaviour in the town centre he conducted foot patrols in the Grove Centre and the Newlands Precinct and mobile patrols on Newland Street to provide a visible deterrent. With the town centre clear CSC Penrose visited the ASDA store where he parked up to conduct a foot patrol along the RiverWalk before returning to his vehicle for further mobile patrols. Due to the manner of driving of one vehicle the driver was stopped, and suitable words of advice were given in this instance. A later incident saw CSC Penrose join an area search for a suspect vehicle following a crash and conduct visible patrols in areas reported for drug related activity.





November 17th

I was invited along with Witham Special Constable Connor Penrose to Essex Police Headquarters where we were to receive recognition from Essex Special Constabulary. Firstly, Connor was awarded a certificate for achieving his Independent Patrol status which has allowed him to join the Witham CSC team. This has required completing a portfolio of tasks to prove his competency in policing, his second award was for his length of service where he has now completed 5 years as a volunteer Special Constable.



The next presentation was for Myself, and I received a Gold Coin and certificate in recognition of my part in gathering evidence, reviewing CCTV, collecting statements from victims and helping to identify suspects in a recent robbery that had occurred previously in Witham within my role as a Special Sergeant.

November 20th

I began my shift with an emergency call in Witham and I attended with PC McShane & PC Roper for a personal attack alarm at Poundland in Witham. This was a curious incident knowing that the store had closed its doors the previous week and when we arrived, we found contractors on the site removing electronic equipment and dismantling racking. Unfortunately, when they had removed the tills, this had triggered the attack alarms. After checking their credentials and ensuring everyone was safe, we returned to conduct a mobile patrol around the town. Within a few minutes we were then alerted to a potential suspect in the town centre and conducted an area search which took us on to the train station. In this instance the person could not be located, and we planned to return to the Police Station to collect additional kit due to the near freezing temperatures.

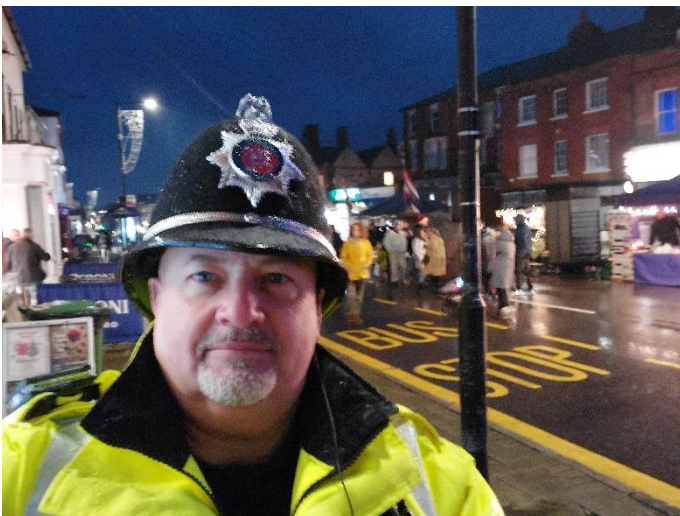
As we arrived in Braintree a suspicious vehicle tried to avoid our attention and following a stop and search of the occupant and the vehicle the driver was arrested and the vehicle seized. This did bring an end to my planned tasks in Witham for the evening as I accompanied PC McShane in conveying the suspect to custody and completing the subsequent procedures.

November 22nd

It was the day of the Annual Witham Christmas Fayre and this year an additional road closure along Maldon Road allowed for more stall holders to add to the festivities. With shows planned throughout the event on the stage on Newland Street I was joined by my Witham CSC team members, Special Superintendent Lorne Campbell, Special Constable Connor Penrose and Braintree Special Constable Stevens.



Splitting in to 2 patrol teams we headed off around the stalls, assisting at one point to escort the reindeer into the Grove Centre, stopping by for a few carols at the service being held by the Reverend Jonathan Pritchard and engaging with shops and stall holders. We were pleased to see so many residents out and supporting the event and we were later joined by PC Roper, PC Hammond & PC Whitby from the Neighbourhood Policing Team. A medical emergency at the bottom of Newland Street required SC Penrose and SC Stevens to assist the ambulance team and ensure they could get safely to their patient. Unfortunately, by this point the rain had started to fall heavily and we switched into our high visibility jackets, but it was great to see that people just put up their brollies, zipped up their coats and carried on.



The food stalls on Newland Street were very popular and the United Reform Church offered some warmth and comfort with their craft stalls and café. The performers on the stage really rallied the crowd as it got closer to the big switch on of the Christmas Lights and at that magical moment it was lovely to just pause and see the joy it brought to the children's faces. As the crowds started to dissipate, we were approached by a young girl who said that she

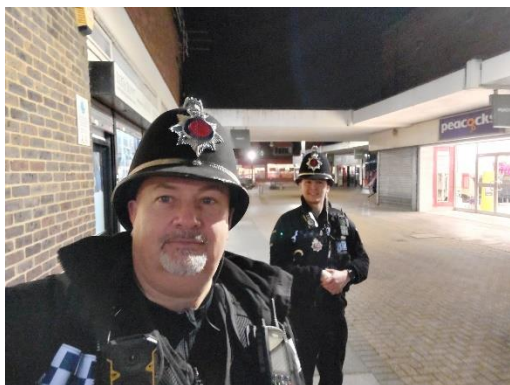


thought she was lost and we immediately set about looking for her parent. This young girl provided us with an excellent description and within minutes one of our patrolling groups had found the parent and we were able to reunite them. We were so very pleased that this young girl recognised that she could come and speak to us, that we would keep her safe and we would find her family which is a key part of our role in Witham, not just at events like this but whenever we are about.

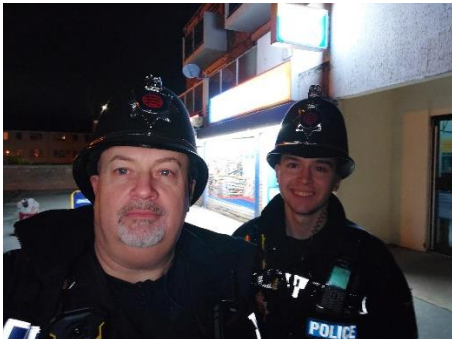
With the people leaving the town centre and the stalls starting to pack up we headed back to our vehicle and stumbled across an intruder alarm sounding at the Aegon premises. We conducted a thorough perimeter search, establishing that there were no signs of forced entry and after confirming with their security team that it was a false alarm we finished our shift.

26th November

I was joined by Witham CSC Officer Connor Penrose, and this provided a great opportunity to visit different places around the town and highlight areas of interest and locations to target his future patrols. We first headed up to the Flora Road estates, driving around Bramble Road, Honeysuckle Way before entering Rosebay Close and the roads on each side. A short foot patrol around the shops on Spa Road provided information in the movement of a vehicle and we visited the COOP for reassurance and engagement. We also wanted to provide visibility and reassurance in the town centre and conducted foot patrols in the Newlands Precinct and Grove Centre, visiting the Town Park and calling in at Morrisons Daily to provide reassurance following a recent incident.



Following our foot patrols, we headed up towards the Hatfield Road estate and began foot patrols to help Connor with the layout and cut throughs. While we were on Allectus Way a person exiting a garden gate took one look at us and started running. In this instance they disappeared into the darkness, but we were able to submit an intelligence report on this behaviour and the property for future scrutiny. With 2 more reports submitted we briefly left Witham to attend an incident in Hatfield Peverel following reports from a concerned member of the public who had seen people acting suspiciously around parked vehicles. We carried out a thorough area search both on foot and vehicle and the informant was thankful for our reassurance. It is important for you to report this kind of incident to help us prevent crime in your neighbourhood.



27th November

A shorter patrol this evening around Witham, however, I first called to meet with a resident concerning a vehicle and provided advice for which they were very thankful. The person had been to see me at a recent Community Beat Surgery and reported an issue which then allowed me to investigate and provide feedback. After conducting mobile patrols in the town centre, I visited Barwell Way after recent reports of anti-social behaviour but pleased to report no concerns were found.



Over the radio a Road Policing Unit had stopped a vehicle on Augustus Way and needed to convey the driver to custody following a positive road side test for drug driving. To assist I was able to sit with the vehicle and arrange recovery.

[Essex Police target drink and drug driving: 328 arrests made in September | Essex Police](#)

The statistics for drink and drug driving are very concerning and as we approach the Christmas period a new campaign will be launched to once again shine a spotlight on this topic to prevent avoidable casualties or deaths on our roads. If you are aware of anyone who may be drink or drug driving or see a vehicle on the road and you suspect that it may be due to drink or drugs, then please report using the methods listed below.

29th November

Before the Community Beat Surgery, I conducted further patrols targeting suspicious vehicles and submitted 2 further intelligence reports. These reports feed into the Essex Police Field Intelligence Officers and they use this to build profiles of potential criminal activity. In turn this information can then be used to enact warrants or targeted operations.



I headed round to The Witham Hub to conduct the Beat Surgery and although the weather appeared to keep most people out of the town, I still managed to speak to quite a few residents before setting off on foot patrol. A visit to the library and the Newlands Precinct to provide reassurance and visibility before I was called to attend an incident near to Walnut Drive. With my presence in Witham, I was able to be on scene quickly and once I had established the circumstances, I cancelled any other units attending from Braintree and I was able to deal with the situation myself. The weather deteriorated further, and it began to get dark, so I headed back to return the vehicle to Braintree Police Station, however, an incident at Freeport saw me volunteer to help my Neighbourhood Policing colleagues convey 2 persons suspected of drug supply to Chelmsford Custody. There was a significant delay in their processing, but I eventually managed to get back on the road to Braintree only to discover a broken-down vehicle on a very dark section of a 60mph road. The driver had left the vehicle and was on the safe side of the barrier but due to the vulnerability of his vehicle I parked up and switched on all my emergency lights to make other drivers aware.



With nearly 3 hours passing the vehicle was safely recovered and I made my way back to Braintree to finish my duty...14 hours after starting!



This concludes the monthly report for November 2025.

Stay up to date with the latest policing news by signing up to our weekly e-newsletter
www.essex.police.uk/dispatch



CrimeStoppers.
Speak up. Stay safe.

0800 555 111
100% anonymous. Always.



[StreetLink - Connecting people sleeping rough to local services](#)

You can find Witham Community Special Constable patrol updates on Twitter / X by searching and following

[Essex Police Witham \(@EPWitham\) / Twitter](#)



Contact Essex Police

Emergency call ☎ 999

Non-Emergency ☎ 101 or 💻 Report it Online

<https://www.essex.police.uk/ro/report/ocr/af/how-to-report-a-crime/>

