





New Look

We are thrilled to announce that our Council newsletter has undergone a complete transformation, with a brand new format! This has been designed to make it easier to access important information about your local community, upcoming events and news from the council.

We would love to hear your thoughts on the new format, so please do not hesitate to contact us with your feedback. You can reach us at admin@witham.gov.uk or by calling 01376 520627.

Page 3

Witham Town Council managed open spaces

Page 4

Witham Town Council Events

Page 6

Witham Street Entertainment Festival Programme



New Councillor for South Ward -Councillor Tom Hewitt

I moved to Witham in 1977 to work at Bridge Hospital as a Nursing Assistant, Staff Nurse, and the Charge Nurse for in-service training, before transferring to Anglia Ruskin University as a Senior Lecturer (Learning Disabilities). I have previously been a Town Councillor, and served as Witham's "Millenium Mayor".

I am proud of the Council's co-operation with the Town's many excellent voluntary organisations and will involve myself fully in such work.



MANAGED OPEN SPACES

Below are the open spaces which are exclusively managed and maintained by Witham Town Council.

The River Walk

Witham's River Walk was conceived as a way of bringing a touch of the countryside through the middle of the town as it began its expansion in the early 1970's. It meanders for about 3.3km along the River Brain, and covers an area of 36 hectares, from Ebenezer Close in the north, to the Whetmead Nature Reserve in the south-east. The River Walk is managed to encourage wildlife, and as such some areas are left untended. As you walk through, you may be lucky enough to glimpse heron, kingfishers, muntjac deer and even otters.

Whetmead Nature Reserve

Whetmead is an area of meadow, woodland and open water. The site is rich in wildlife and covers around 10 hectares. The site was passed into the care of Witham Town Council in 2005, and is today home to many species of plants and animals. The rivers Blackwater and Brain merge on the reserve, and a path follows both river banks. You may be lucky enough to glimpse a basking lizard on a sunny day, or a water vole on the riverbank.

James Cooke Woods

The woodland was planted with British trees local to the area by Witham Town Council. The main tree species are: Wild Cherry, Oak, Silver Birch, Alder and Ash. Further areas are planted with smaller, shrubby species such as Hazel, Field Maple, Guelder Rose and Spindle. This variety of trees provide the maximum benefit for wildlife. The woodland is surrounded by hedgerows that originally acted as the boundary to the former arable field. The hedges are especially important for threatened farmland birds, such as the yellowhammer, providing them with a food source and a place to nest.

The Closed Churchyard

On 20th March 1991, the All Saint's Churchyard was closed. In accordance with the Local Authority Act the Town Council, in conjunction originally with the PCC of St Nicolas Church, took over responsibility for its management.

The Church was dedicated in 1842 as a Church of Easement, and was made redundant in 1969. It was later sold to the Roman Catholic Church to become, after extensive renovation, the Holy Family and All Saint's Church in 1989



WITHAM TOWN COUNCIL EVENTS

Boasting picturesque outdoor spaces and a central high street, Witham is the ideal spot for a variety of events. Alongside some fantastic independent arrangements, Witham Town Council hosts a range of community focused events for residents and visitors alike. From long-standing family events such as the Puppet Festival (now the Witham Street Entertainment Festival) to the revamped Christmas Fayre and brand new Hallowe'en Spooktacular, you are sure to find an event for all ages. Always looking to engage the community and offer variety and entertainment for all, Witham Town Council is committed to providing enjoyable events for all ages.



Easter

This year's Easter Event took place on Witham's River Walk on Saturday 8th April. So children could follow the Easter Bunny's trail along the River Walk and claim an Easter treat at the end.

It was a beautiful sunny day and the event was enjoyed by everyone.

Witham Music Festival

On May 6th 2023 Witham Town Council held a Musical Festival on the River Walk in Celebration of King Charles III and Queen Camilla's Coronation. This event included live music, food and drink stalls, rides, and entertainment for all the family.



Witham Street Entertainment Festival

Witham Street Entertainment Festival returns on Saturday 16th September 2023, and will feature the ever-popular Titan the Robot!

Keep an eye on our website and social media for further details.

Hallowe'en in Witham

This year's Hallowe'en event will take place on Saturday 28th October. More details will be released nearer the time. Last year involved a 'Wizard of Witham' trail along the River Walk, with lots of fun characters to meet along the way.





Remembrance Sunday Parade

The Remembrance Sunday Service takes place this year on Sunday 12th November. As usual, the parade will start at 2.15pm from The Avenue, progressing up towards the junction with Collingwood Road where it turns left and continues down Collingwood Road to the junction with Newland Street. There, the procession will turn left and finish at 3pm at the Memorial Gardens where a short service will take place. Local Road Closures will be in force.

Christmas in Witham

Witham Christmas Fayre returns on Saturday 2nd December. This event sees Newland Street filled with stalls, music and performers. You can also visit Santa in his Grotto, and browse the 'Crafters Corner' at the United Reformed Church.



PREVIOUS EVENTS....

Queen's Platinum Jubilee

Celebrations for the Queen's Platinum Jubilee took place on the River Walk on Thursday 2nd June 2023, with food, drink and entertainment for all the family, culminating in a lighting of a beacon and finishing at 10pm. The weather was sunny and the event was well supported.



Witham Dog Show

Witham Dog Show was back in 2022, and a fabulous time was had by all at our second Dog Show. The crowds enjoyed the opportunity to try some flyball and our agility course, the shopping, the food and drink stalls and of course the show arena with our fun competitions.



Event Programme

The Grove

- 10:00am - Sloth Time, Panda & Los Kaos
- 10:30am - Granny Turismo
- 11:00am - Dolphins & Fabulous Footprints
- 11:30am - Tree Flowers & Granny Turismo
- 12:00pm - Sloth Time & Panda
- 12:30pm - Granny Turismo & Dolphins
- 1:00pm - Fabulous Footprints & Tree Flowers
- 1:30pm - Dolphins
- 14:00pm - Sloth Time, Panda & Los Kaos
- 14:30pm - Fabulous Footprints & Tree Flowers

Newlands Shopping Centre

- 10:00am - Mr Ruffle & Spring-a-Lings
- 10:30am - Mr Ruffle & Dress Circle
- 11:00am - Mr Ruffle & Pongo
- 11:30am - Mr Ruffle & Makeup
- 12:00pm - Mr Ruffle & Spring-a-Lings
- 12:30pm - Mr Ruffle & Pongo
- 1:00pm - Mr Ruffle & Makeup
- 1:30pm - Mr Ruffle & Dress Circle
- 14:00pm - Mr Ruffle & Spring-a-Lings
- 14:30pm - Mr Ruffle & Pongo & Makeup

Newland Street Road Closure

- 10:00am - Ballon Modellers & The Dragon
- 10:30am - The Dragon & Seagulls
- 11:00am - The Dragon & Rebel Legion
- 11:30am - The Dragon
- 12:00pm - The Dragon & Seagulls
- 12:30pm - The Dragon & Nutkins
- 1:00pm - Rebel Legion & Ballon Modellers
- 1:30pm - Nutkins & Seagulls
- 14:00pm - Ballon Modellers
- 14:30pm - Nutkins

Witham Library

- 10:00am - Princesses
- 10:30am - Princesses
- 11:00am - Break
- 11:30am - Break
- 12:00pm - Princesses
- 12:30pm - Princesses
- 1:00pm - Break
- 1:30pm - Break
- 14:00pm - Princesses
- 14:30pm - Princesses



Event Programme

Witham United Reformed Church

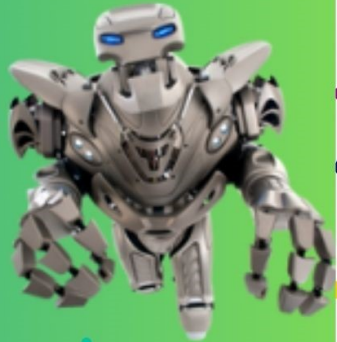
- 10:00am - Polar Bear & Frostie
- 10:30am - Break
- 11:00am - Frostie
- 11:30am - Break
- 12:00pm - Polar Bear
- 12:30pm - Frostie
- 1:00pm - Break
- 1:30pm - Break
- 14:00pm - Polar Bear
- 14:30pm - Frostie

Newland Street

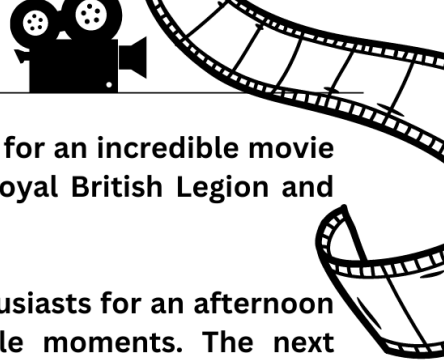
- 10:00am - Hodsmen and Sally
- 10:30am - Dragon Tamer
- 11:00am - Belladonna
- 11:30am - Dragon Tamer
- 12:00pm - Hodsmen and Sally
- 12:30pm - Belladonna
- 1:00pm - Dragon Tamer
- 1:30pm - Hodsmen and Sally
- 14:00pm - Rebel Legion
- 14:30pm - Belladonna

Lockrams Lane Car Park

- 10:00am - Titan
- 10:30am - Break
- 11:00am - Break
- 11:30am - Break
- 12:00pm - Titan
- 12:30pm - Break
- 1:00pm - Break
- 1:30pm - Break
- 14:00pm - Titan
- 14:30pm - Break



SUNDAY CINEMA



Join us for just £1 at Witham's Sunday Cinema for an incredible movie experience! This takes place at the Witham Royal British Legion and doors open at 2pm.

Bring your friends, family and fellow film enthusiasts for an afternoon filled with laughter, emotion and memorable moments. The next showing will be of 'Roman Holiday' on Sunday 8th October.

WITHAM YOUTH GROUPS



This is held at the Witham Rugby Club and gives 11- 17 year olds a space to come and hang with their friends, take part in sports, crafts, games and much more. Each session costs £1 and you can find further details on their website: <https://withamhangout.co.uk/>

The LGBTQ+ Youth Group is for members and friends of the community between the ages of 13-19. This takes place on Mondays between 5-7pm. To join, or for further details, contact Anastasia on 07788 301600.



The Explorer Scouts is for those aged between 14-18 and takes place on Mondays between 8-9:30pm. Contact Simon on 07979 226707 for further details.

The Platinum Majorettes Group is based at Parkside Youth Centre and meets on Thursdays & Fridays between 6.30-8.30pm. Contact Caroline on 07966 376245 for more details.



For any questions regarding local groups you can also contact the Information Centre on 01376 520627 (op 1)

UPCOMING EVENTS



CATS & BATS

WITHAM TOWN COUNCIL WELCOMES YOU TO FOLLOW CURIOUS CAT FOOTPRINTS ALONG THE RIVER WALK!

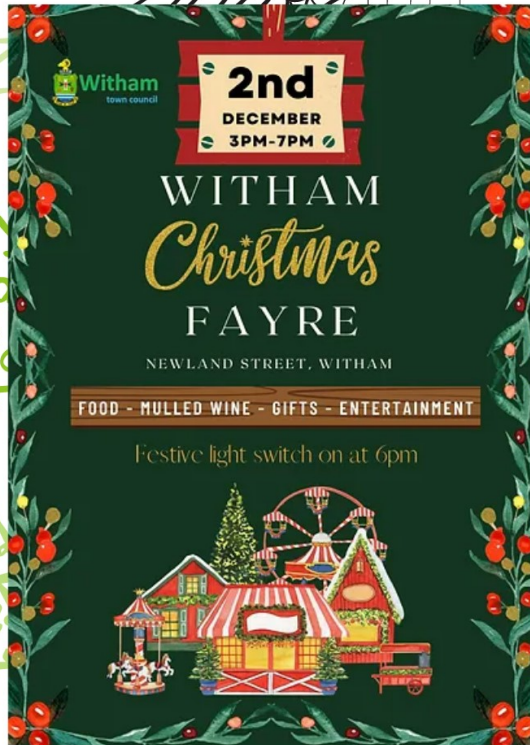
SATURDAY 28TH OCTOBER
10AM - 4PM


FIND OUT MORE INFORMATION AND BOOK YOUR FREE TICKETS ON:
WWW.WITHAM.GOV.UK

 Witham
town council

This year's Hallowe'en event will take place on **Saturday 28th October**. More details will be released nearer the time

Witham Christmas Fayre returns on **Saturday 2nd December**. Follow us on social media for more details nearer the time.



 Witham
town council

2nd
DECEMBER
3PM-7PM

WITHAM
Christmas
FAYRE

NEWLAND STREET, WITHAM

FOOD - MULLED WINE - GIFTS - ENTERTAINMENT

Festive light switch on at 6pm

TOWN HALL ROOM HIRE



The 15th Century Grade II listed Town Hall provides the perfect space for your function, whether it is a professional conference, a catered party or training session, we have the space for you.

Located in the heart of a historic market town, Witham Town Hall provides an ideal venue for your business or social function.

Situated close to the A12 and just 10 minutes walk from Witham train station, regular transport links between London, Ipswich and the local area make the venue easily accessible.

With disabled access available at the rear of the building and a lift to access the upper, our accessible venue is suitable for all.

Chamber

Our Council Chamber is ideal for business meetings and presentations. With multi-screen viewing that can be linked to your personal device.

The Chamber can seat around 20 people at the table and can be set up individual to your booking.

Function Room

Our Function Room provides a bright and modern space for your event, with a fully equipped kitchen offering multiple catering options.

Heritage Room

In our 'Heritage Room' you can see our 16th century fireplace, commemorative book and a changing display of Witham historical artefacts.

This space is ideal for smaller meetings for around three to four people, or small pop up exhibitions.

To enquire about booking one of these rooms please email admin@witham.gov.uk or call 01376 520627

HOW CAN YOU GET INVOLVED?

Salt bag Partnership Scheme

Calling all Winter Heroes! Join Witham's winter pavement salting volunteer programme.

While Essex Highways clear our main roads and bus routes, snow and ice can make walking hazardous, especially for our more vulnerable residents. That is why we need YOUR help to keep our community safe and accessible throughout the winter. We will provide a large 25 kg bag of salt and safety guidelines and we are looking for strong volunteers to clear and salt pavements in their area, especially in key areas near bus stops, crossing points, local shops, schools and doctors' surgeries. Don't worry - Essex Highways will still remain primarily liable.

To get involved with clearing local pavements close to you, or to find out more, please email openspacesadmin@witham.gov.uk or call 01376 520627.

Together, we can make our winter season safer and more enjoyable for everyone.

Witham In Bloom

We are delighted to announce the relaunch of the beloved 'Witham In Bloom' project! After a brief hiatus, we are eager to revitalise our town's beauty and bring back the splendour of floral elegance that once adorned our streets, parks, and public spaces. We can't do this without the amazing support of volunteers like you!

Witham has always been a town known for its community spirit and natural charm. Now, with the 'Witham In Bloom' project, we have the opportunity to enhance our town's aesthetic appeal, create a more vibrant atmosphere and foster a deeper connection to nature. By increasing the floral coverage within our town, we aim to make Witham an even more beautiful and inviting place to live, work and visit.

But to make this vision a reality, we need your green thumbs and passion for nature to flourish alongside our blossoming gardens. Whether you're an experienced gardener or someone looking to get your hands dirty for the first time, there's a place for you in this rewarding endeavour. **Contact openspacesadmin@witham.gov.uk for further details.**





TOWN HALL AND INFORMATION CENTRE

**61 Newland Street, Witham, Essex,
CM8 2FE**

Witham Town Council Offices are open
Monday - Thursday 9:00AM-5:00PM and
Friday 9:00AM-4:00PM.

The Information Centre in the Town Hall
is open from 9:00AM-4:30PM Monday,
Tuesday and Thursday, 10:00AM -
4:30PM Wednesday and 9:00AM -
3:50PM Friday.

Both are closed Weekends and Bank
Holidays.

Meetings of your Town Council are open
for you to attend.

Full details are displayed at
www.witham.gov.uk

Agendas are on display on the
noticeboard in Newland Street.

Meetings usually begin at 7:30PM and
Planning Applications & Transport
Committee meetings at 6:30PM. These
are held in the Council Chamber at the
Town Hall.

**For further information please contact
the Town Hall:**

Office: 01376 520627 (Op 2)
townclerk@witham.gov.uk

Information Centre: 01376 520627 (Op 1)
infocentre@witham.gov.uk

YOUR COUNCILLORS

CENTRAL WARD

Barry Fleet: cldr.b.fleet@witham.gov.uk
Ross Playle: cldr.r.playle@witham.gov.uk

WEST WARD

Susan Ager: cldr.s.ager@witham.gov.uk
Jack Coleman:
cldr.jack.coleman@witham.gov.uk
Ron Ramage: cldr.r.ramage@witham.gov.uk
Artur Sloma: cldr.a.sloma@witham.gov.uk

SOUTH WARD

Joan Coleman:
cldr.joan.coleman@witham.gov.uk
Jacqueline Martin:
cldr.j.martin@witham.gov.uk
Paul Heath: cldr.p.heath@witham.gov.uk
Tom Hewitt: cldr.t.hewitt@witham.gov.uk

NORTH WARD

Phil Barlow: cldr.p.barlow@witham.gov.uk
Leanora Headley:
cldr.l.headley@witham.gov.uk
Billy Taylor: cldr.b.taylor@witham.gov.uk
Ethan Williams:
cldr.e.williams@witham.gov.uk

HATFIELD WARD

Emmanuel Adelaja:
cldr.e.adelaja@witham.gov.uk
Lucy Barlow: cldr.l.barlow@witham.gov.uk